



# McPhee Red Angus

Welcome to McPhee Red Angus 2018 Sale

We are offering you a chance to get it All. All the calving ease, All the growth, All the carcass quality you need, and All in one package. McPhee Red Angus has been raising quality, reliable seedstock for 47 years. We feel it is important for you as customers to have all the tools you need to make your selection. That is why all bulls have been performance tested, fertility tested, ultrasound carcass and tenderness scanned. And we are offering you a chance, to take advantage of all the work and data we have collected over the last 47 years of our successful program.

This offering of bulls and females is second to none. We are really proud of this set of cattle. We have 12 sons of McPhee Trophy to sell. These calves really rose to the top, take a look at them, you will be impressed. There are many progeny of our young herdsire Royce's Dun Right bull too. We really like his calves. We have calves from our senior herdsires, as well as our newest herdsire Brown Outstanding C271 who has a select group of bulls that are calving ease specialists. We have a special guest consignment of 3 bulls from Bianchi Ranch this year too.

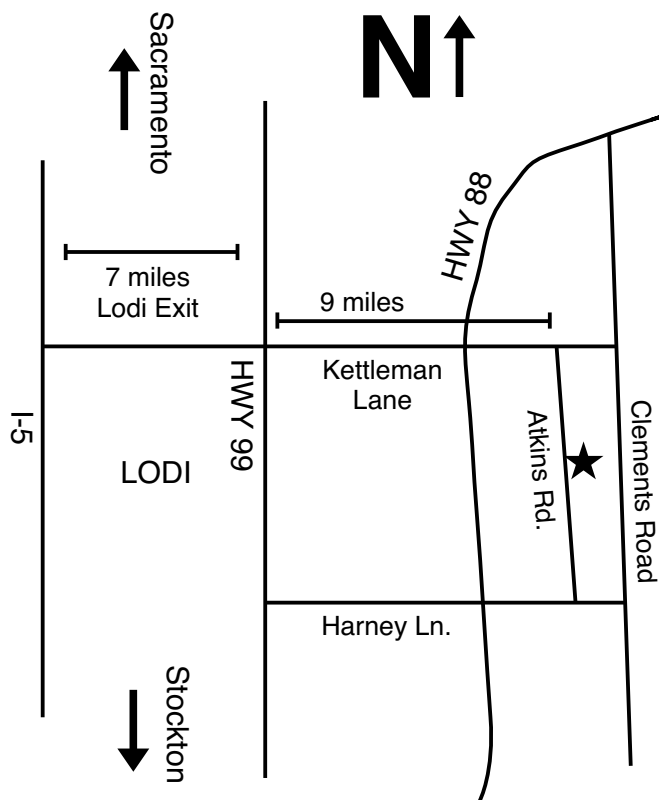
For those wanting females, we have 30 heifer mates to these bulls. They are ready to be bred at your convenience. We have a special treat for those wanting a spring show heifer too. We have 5 fancy heifer calves to be offered. There is something for everybody.

Join us at 10:30 to get your choice of females, then a great beef lunch at noon and then the bulls sell at 1 pm. See you there!

*The McPhee Family*



# Sale Information



• From I-5, take the Lodi exit east and travel 16 miles. Turn right on Atkins Road and travel 1/2 mile to the ranch.

• From Hwy 99, take Kettleman Lane exit and go east 9 miles. Turn right on Atkins Road and travel 1/2 mile to the ranch.

• Coffee and rolls will be available for early arrivees.

## Health:

- Bulls will have been semen tested
- Females have been brucellosis vaccinated
- All lots received calfhood vaccinations of Ivomec, 8way, Lepto, IBR, BVD, PI3, and BRSV
- Anaplas vaccine will be available to buyers who request it

## Lot Numbers:

Yellow eartag lot numbers will correspond to sale catalog.

- 1-15 Herd Bull Prospects
- 16-47 Yearling Bulls
- 48-50 Bianchi Bulls
- 52-81 Open Yearling Heifers
- 82-85 Spring Show Heifer Prospects

## Inspection:

Cattle will be available for inspection at the ranch from September 18 until the day of the sale.

## Location:

McPhee Red Angus  
14298 N. Atkins Rd.  
Lodi, CA 95240  
209-727-3335

## Sale Times:

10:30 am • Females

Complimentary Beef Lunch at noon  
Served by the San Joaquin-Stanislaus CattleWoman

1:00 pm • Bulls

## Accommodations:

### Holiday Inn Express

1337 E. Kettleman Lane  
Lodi, CA 95240  
1-877-320-8455

### Hampton Inn

1337 S. Beckman Road  
Lodi, CA 95240  
209-369-2700 • 800-445-8667

## Airports:

- Stockton Airport
- Sacramento Airport
- Lodi Airport –private planes

Please call us in advance if you would like to be picked up at the airport.

## Sale Day Phones:

House: 209-727-3335 • Rita: 209-607-9719  
Mary: 209-400-4909

## Phone Bids:

Phone bids will be handled with the strictest of confidence by sales representatives.

## Auctioneer:

Rick Machado, 1999 World Champion Auctioneer  
Arroyo Grande, CA • 805-474-9422

## Sale Representatives:

- Matt MacFarlane 916-803-3113  
*California Cattleman*
- Logan Ipsen 916-947-2392  
*Western Livestock Journal*
- Katie Ochsner 940-387-3502 Ext 16  
*Red Angus Association*

## Retained Interest:

Retaining 25% semen interest in Lots 1-15.

# Terms & Conditions

**BIDDING DISPUTES:** The auctioneer in charge will settle any disputes as to bids and his decision in such matters shall be final.

**TERMS:** The terms of sale are cash or check, the right of property shall not pass until after settlement is made. All settlements will be made with the clerks of the sale immediately following the conclusion of the sale and before any cattle will be released from the ranch.

**RETAINED INTEREST:** Seller reserves the right to keep a breeding interest in any bull so designated in the catalog or during the auction.

**PURCHASER'S RISK:** Each animal becomes the risk of the buyer as soon as sold, but it shall be the obligation of the seller to see that animals are fed and cared for free of charge to buyer, until loaded for shipment or until 48 hours after the sale, whichever occurs first.

**INSURANCE:** Insurance representatives will be present to care for insuring cattle.

**CERTIFICATE OF REGISTRY:** A certificate of registry and transfer will be furnished for each animal sold as a registered animal, after settlement has been made.

**HEALTH:** Health certificates will be provided for interstate shipment.

**ANNOUNCEMENTS:** Changes of information contained in this catalog relating to the animals offered for sale will be announced from the auction box and such announcements shall take precedence. Errors discovered in the catalog will be corrected by announcements at sale time and such corrections will take precedence over the printed matter in this catalog.

## EPDs

<b>HERD</b>	herdbuilder index
<b>GRID</b>	gridmaster index
<b>CED</b>	calving ease direct
<b>BW</b>	actual birth weight
<b>WW</b>	adjusted weaning weight
<b>YW</b>	adjusted yearling weight
<b>ADG</b>	average daily gain from weaning to yearling
<b>IMF</b>	adjusted yearling intramuscular fat ultrasound
<b>REA</b>	adjusted yearling ribeye area ultrasound
<b>SCR</b>	scrotal measurement adjusted to one year of age
<b>BW</b>	birthweight EPD
<b>WW</b>	weaning weight EPD
<b>YW</b>	yearling weight EPD
<b>ADG</b>	Average Daily Gain EPD
<b>DMI</b>	Dry Matter Intake EPD
<b>Milk</b>	milk EPA
<b>ME</b>	maintenance energy
<b>HPG</b>	heifer pregnancy
<b>CEM</b>	calving ease maternal
<b>STAY</b>	stayability
<b>MARB</b>	marbling score
<b>YG</b>	yield grade
<b>CW</b>	carcass weight
<b>REA</b>	rib eye area
<b>FAT</b>	12th rib fat thickness

**BREEDER'S GUARANTEE:** All animals sold are guaranteed breeders by the owner. Any animal that has not proven itself a breeder within six months after date of sale, if in healthy condition, may be returned to seller at buyer's expense. The seller reserves the privilege of trying to a period of six months to prove the animal a breeder. The seller at his option may either give a credit (minus salvage value of the animal) at a future sale or replace the animal with another of equal quality in full settlement and transaction of ALL claims. Yearling bulls shall be guaranteed breeders for no more than 25 (twenty five) females. All complaints regarding breeding difficulties must be reported in writing by the buyer to the seller within the specified time as noted above, and any animal returned must be free from disease, parasites and in good health.

**IDENTIFICATION:** Each animal carries a readable tattoo. Tag numbers on cattle correspond with lot and tattoo numbers in this catalog. Purchaser agrees to use full name of animal in advertising and on stall cards at shows.

**LIABILITY:** Neither owners, sale manager, clerks nor anyone connected with the sale assumes responsibility, legal or otherwise, for damage of anykind.

**CONTRACT:** The above terms and conditions shall constitute a contract between the buyer and seller of each animal sold.



*As Good as the Best and  
Better than the Rest!*

## REGISTRY CATEGORIES:

1A: 100% Red Angus, no disqualifying features

1B: 87% to and including 100% Red Angus blood content, no disqualifying features

II: Equal to or greater than 87% up to and including 100% Red Angus blood content having one or more disqualifying characteristics

III: Less than 87% Red Angus blood content

# Carcass Ultrasound Testing Results Will Include Tenderness Indicators

From the consumer's perspective, there are five palatability factors concerning meat. Of those five, tenderness remains at the top of consumers check lists. Current ultrasound-based technologies used for carcass evaluations have a direct correlation to the measurement of the amount of back fat, rib-eye area and intramuscular fat know as marbling, but there has been a need for more accurate analysis pertaining to the tenderness portion of the quality grade.

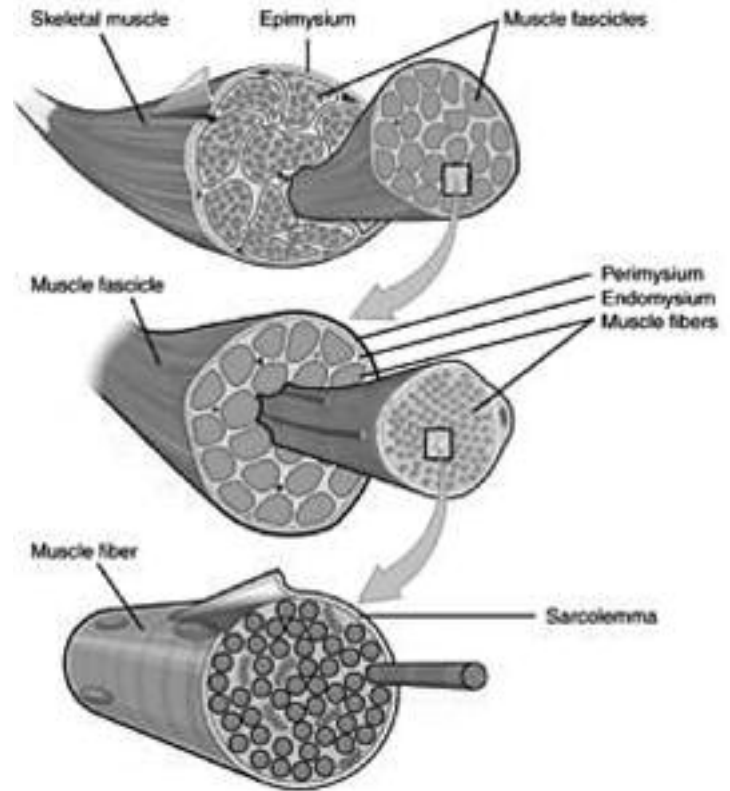
Through cutting edge ultrasound technology that has been developed and patented, we are now able to identify certain land marks within the muscle structure, which when analyzed allows us to give it a tenderness ratio.

Tough muscle typically has a coarser structure having a lower number of larger sized bundles and fibers. Therefore, meat compromised of smaller, more refined sized, finer fascicles and or sarcomeres will be tenderer!

Animals are born with a set number of bundles within their own muscle make up. They never grow any new bundles nor do they lose any, it becomes a very common denominator. This technology allows us to see both the IMF and the bundles with very identifiable clarity. We also note that IMF does not show up in the muscle but between the sheaths of the bundles that make up the muscle. They are two different types of cellular tissue. You cannot feed on tenderness which is why tissue comparison must be done.

We feel it is important to stay in the forefront of technology and science available to add profitability and marketing options to our customers programs. In addition to traditional carcass ultrasound methods, each bull has been analyzed by Practitioner John

Openshaw, and a tenderness score has been denoted on each bull lot. You can use the tenderness ratio chart below to help understand the scoring methods and translate the results. A bull list will be available sale day too.



Tenderness Ratio Chart	EHM=Extreme High Marbling		HM= High Marbling	
	1	2	3	4
HIGHLY TENDER	TENDER	SLIGHTLY TENDER	TOUGH	
8 - 16	17 - 25	26 - 40	41 - 60	
★★★★	★★★	★★	★	



1876358  
RED ANGUS

# RED RIGHT. NOW.

*Red Angus are the industry favorite for high-quality feeder cattle and ranch-ready replacements. The highly identifiable "Yellow Tag" adds even greater value through marketing options.*

*Call today for FREE enrollment in the Feeder Calf Certification Program:*

**940-387-3502, Ext. 2**

**Ranch Tested. Rancher Trusted.**

# Red Angus

**redangus.org**

**A**

**MCPHEE TROPHY 36**

Tattoo:36 Birth: 2/23/13 REG#: 1597069 CAT:A 100% AR

BROWN COMMITMENT S7206

**BROWN COMMITMENT X7787**

BROWN MS REVELATION T7650

MCPHEE NEW REVELATION

**ROYCE'S SENSATIONAL 14**

JST RUBY'S ROBIN

TENDER	BW
	64
IMF	WW
4.57	1029
REA	YW
13.13	1605
SCR	ADG
40	3.59

HB	GM	CED	BW	WW	YW	ADG	DMI	Milk	ME	HPG	CEM	STAY	Marb	YG	CW	REA	FAT
149	56	3	-1.4	79	132	0.33	1.34	33	5	12	1	13	0.82	0.07	46	0.38	0.02

McPhee Trophy 36 is the powerhouse sire that demands attention. His progeny are stand-outs all across the nation. Last spring a son was the overall high performing bull over all breeds at the Treasurer Valley Bull Test for J Bar Stenberg Ranch in Montana. This set of sons in the sale averaged 820 lbs at weaning, and continued to be standouts all the way through to YW. With McPhee Trophy in the pedigree, your calves are sure to garner those added premiums come market time. An added bonus is Trophy comes from that highly sought after maternal line too. When Royce took the opportunity to sell Trophy's dam, Royce's Sensational 14 at the National Western Stock Show in Denver last January for the record price of \$54,000. This is a multi-dimensional sire, which continues to impress as each calf crop hits the ground. His first daughters are in production this year and are doing an exceptional job. Whether you're looking for a terminal sire or wanting replacements females,



**MCPHEE TROPHY 36**

McPhee Trophy is the pedigree you need in your herd, you will not be disappointed. SEMEN AVAILABLE THROUGH ALTA GENETICS

**B**

**ROYCE'S DUN RIGHT 44**

Tattoo:44 Birth: 3/22/14 REG#: 1670767 CAT:A 100% AR

BECKTON NEBULA P P707

**BROWN JYJ REDEMPTION Y1334**

JYJ MS JOLENE W16

LSF JBOB EXPECTATION 6034S

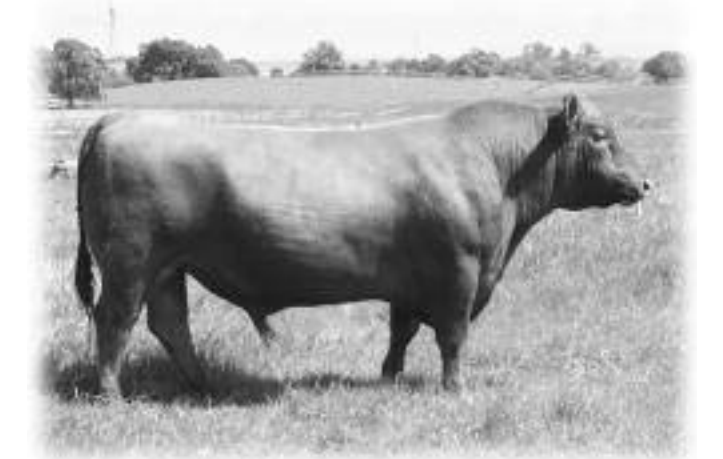
**LRA DUNNI 211**

DUNN LAKOTA EDGE 0915

TENDER	BW
	74
IMF	WW
NA	863
REA	YW
NA	1356
SCR	ADG
34	3.07

HB	GM	CED	BW	WW	YW	ADG	DMI	Milk	ME	HPG	CEM	STAY	Marb	YG	CW	REA	FAT
152	54	11	-3.7	64	107	0.26	1.35	26	-1	12	9	11	1.04	0.05	28	0.2	0.02

Royce's Dun Right 44 a herdsire that packs it all into one stylish eye catching package. It's a rare chance to find a bull that can dominate the show ring and still get out and work. This bull does that and a whole lot more. He offers a complete EPD package across the board. He has been used on heifers and cows alike, with great success. He makes calving seasons so enjoyable to go out and find these thrifty low BW calves that have gotten up and nursed already. This is a herdsire that has made a tremendous impact in our herd. Sadly this will be some of his last progeny as we lost him last winter to injury.



**ROYCE'S DUN RIGHT 44**

**C**

**MCPHEE NEW REVELATION 4630**

Tattoo:4360 Birth: 1/5/08 REG#: 1234552 CAT:A 100% AR

BFCK CHEROKEE CNYN 4912

**BROWN REVELATION P7021**

BROWN MS VICILA M7799

GOLDMINE 7416

**MCPHEE SMART PICK 4489**

PEARL 3416

TENDER	BW
	61
IMF	WW
6.25	679
REA	YW
18.17	1282
SCR	ADG
37	3.77

HB	GM	CED	BW	WW	YW	ADG	DMI	Milk	ME	HPG	CEM	STAY	Marb	YG	CW	REA	FAT
138	55	7	-3.4	59	111	0.32	0.87	35	5	15	3	11	0.67	0.1	32	0.45	0.06

McPhee New Revelation 4360 is our premiere multi trait sire with 9 traits ranking in the breeds top 25%. With over 200 calves on the ground, he offers the complete package. He is proven, with a YW EPD of 111 ranking in top 23% of the breed, and he also offers that maternal punch with a milk EPD of 35 and ranking in the top 1% for milk, 23% for MARB and 18% for REA. These are all the economically relevant traits that will put the dollars back in your pocket. You can't go wrong when you use New Revelation genetics in your herd. He is a moderate sized bull with loads of muscle and length of body and great feet and legs. SEMEN AVAILABLE



**MCPHEE NEW REVELATION 4630**

EPD Averages for Non-Parents Under Two Years of Age

100 HB	49 GM	5 CED	-2.0 BW	58 WW	90 YW	0.20 ADG	0.63 DMI	21 MILK	1 ME	12 HPG	5 CEM	10 STAY	0.46 MARB	0.02 YG	21 CW	0.11 REA	0.00 FAT
--------	-------	-------	---------	-------	-------	----------	----------	---------	------	--------	-------	---------	-----------	---------	-------	----------	----------

**D**

**MCPHEE REMARKABULL 4669**

Tattoo:4669 Birth: 2/8/12 REG#: 1516786 CAT:A 100% AR

BROWN COMMITMENT S7206

**MCPHEE TOP COMITTMENT 352**

BROWN MS DESTINATION T6986

MAN OF THE HOUR 3000

**SCARLET 4064**

STAR 2862

TENDER	BW
	81
IMF	WW
4.32	878
REA	YW
13.46	1476
SCR	ADG
37	3.72

HB	GM	CED	BW	WW	YW	ADG	DMI	Milk	ME	HPG	CEM	STAY	Marb	YG	CW	REA	FAT
133	54	4	-0.6	71	108	0.23	0.86	25	7	14	6	11	0.77	-0.04	33	0.32	-0.01

McPhee Remarkabull 4669 has a performance packed pedigree. His dam is no stranger to raising herdsires, as she is also the dam of McPhee Done it who is a herdsire at Pelton Red Angus in Kansas. Remarkabull is a long bodied stylish looking bull, packed with loads of performance. These are all traits we see him pass along to his offspring. A sire that will get your calves noticed by the packer and keep them wanting more. Remarkable has proved he has what it takes to get his calves noticed.

SEMEN AVAILABLE



**MCPHEE REMARKABULL 4669**

**E**

**BROWN OUTSTANDING C271**

Tattoo:C271 Birth: 1/29/15 REG#: 3478625 CAT:A 100% AR

LJC MISSION STATEMENT P27

**BROWN PHENOMENAL Z7310**

BROWN BLUE MOON U7791

BROWN JYJ REDEMPTION Y1334

**BROWN MS REDEMPTION A7174**

BROWN MS PRIDE X7643

TENDER	BW
	56
IMF	WW
3.42	633
REA	YW
11.51	959
SCR	ADG
37	2.02

HB	GM	CED	BW	WW	YW	ADG	DMI	Milk	ME	HPG	CEM	STAY	Marb	YG	CW	REA	FAT
187	54	14	-7.3	60	100	0.25	1.52	17	4	11	5	16	1.03	-0.1	19	0.53	0.01

This young herdsire is just getting started on his career here at McPhee Red Angus. He was our pick from the RA Brown Ranch Sale in fall of 2016. He arrived in California just at the end of breeding season, so we immediately put him to work. He offers an endless amount of calving ease and carcass quality. His BW and Marb EPDs rank him in the top 1% of the breed along with 5 other traits in the top 5%. With just a few progeny in the sale, this is your chance to get in on the beginning of what I am sure will be an extremely profitable impact in our herd and yours.



**F**

**WCR POWER EYE 5041C**

Tattoo:5041C Birth: 2/24/15 REG#: 1743140 CAT:A 100% AR

RED COCKBURN RIBEYE 308U

**RED SOO LINE POWER EYE 161X**

RED TR LYNN 301R

RED FINE LINE MULBERRY 26P

**HARMONYS MISS STONY 1229**

HCFA MS STONY 416

TENDER	BW
	84
IMF	WW
NA	683
REA	YW
NA	
SCR	ADG
NA	

HB	GM	CED	BW	WW	YW	ADG	DMI	Milk	ME	HPG	CEM	STAY	Marb	YG	CW	REA	FAT
121	50	1	-0.3	72	119	0.29	0.8	8	-3	15	5	10	0.13	0.19	40	-0.14	0.01

Power Eye has been a game changer here at Bianchi Ranches; adding stoutness and muscle that you just don't see very often in the Red Angus breed. He moves around with ease while being so attractive throughout this front end. All of his calves are born with ease and hit the ground running



**WCR POWER EYE 5041C**

EPD Averages for Non-Parents Under Two Years of Age

100 HB	49 GM	5 CED	-2.0 BW	58 WW	90 YW	0.20 ADG	0.63 DMI	21 MILK	1 ME	12 HPG	5 CEM	10 STAY	0.46 MARB	0.02 YG	21 CW	0.11 REA	0.00 FAT
--------	-------	-------	---------	-------	-------	----------	----------	---------	------	--------	-------	---------	-----------	---------	-------	----------	----------



# McPhee Red Angus • Herd Bull Prospects

1

## ROSE'S PRINCE CHARMING 112

HM

Tattoo:112 Birth: 3/19/17 REG#: 3769161 CAT:A 100% AR

BROWN JYJ REDEMPTION Y1334

### ROYCE'S DUN RIGHT 44

LRA DUNNI 211

MCPHEE TOP COMMITMENT 352

### ROSIE'S FAIRYTALE 41

MCPHEE'S SPOTLIGHT 25

TENDER	BW
★★★	78
IMF	WW
3.83	1003
REA	YW
13.43	1346
SCR	ADG
37.3	2.14

HB	GM	CED	BW	WW	YW	ADG	DMI	Milk	ME	HPG	CEM	STAY	Marb	YG	CW	REA	FAT
154	57	3	-0.8	92	148	0.35	1.42	27	11	12	2	13	0.73	0.09	57	0.31	0

Roses Prince Charming 112 is a true aristocrat. Look at his data, it doesn't get any better than this! He ranks in the top 1% of the breed for 5 traits. His WW and YW EPDs are off the charts. He starts with a negative BW EPD and then explodes with a adj WW of 1003 pounds and a 125 ratio. His adj YW is 1346 pounds with 120 ratio. This prince will pack the pounds on your calves. His noble dam has an outstanding MPPA of 109.2. His royal pedigree is filled with the breed's elite sires and dams. He has regal good looks — your cows will think they are queens!



ROSE'S PRINCE CHARMING 112

2

## MCPHEE FULL REWARDS 84

Tattoo:84 Birth: 7/7/17 REG#: 3932919 CAT:A 100% AR

BROWN COMMITMENT X7787

### MCPHEE TROPHY 36

ROYCE'S SENSATIONAL 14

LSF JBOB EXPECTATION 6034S

### LRA DUNNI 211

DUNN LAKOTA EDGE 0915

TENDER	BW
★★★	82
IMF	WW
3.71	636
REA	YW
13.07	1163
SCR	ADG
33.24	3.29

HB	GM	CED	BW	WW	YW	ADG	DMI	Milk	ME	HPG	CEM	STAY	Marb	YG	CW	REA	FAT
138	56	3	-1.2	69	113	0.28	1.2	34	5	13	3	12	1.07	0.02	36	0.45	0.02

McPhee Full Rewards 84 will surely reward you. This bull rings all the performance bells and whistles. He has a fantastic suite of EPDs starting with a negative BW to 113 YW EPD. He ranks in the top 15% of the breed for eight different traits including top 2% for Milk and Marb. He is a maternal half-brother to our herdsire Royce's Dun Right 44, who has many great calves in this offering. His sire is Trophy, a very sought after bull in the breed.

3

## MCPHEE HOMERUN TROPHY 464

Tattoo:464 Birth: 7/4/17 REG#: 3932887 CAT:A 100% AR

BROWN COMMITMENT X7787

### MCPHEE TROPHY 36

ROYCE'S SENSATIONAL 14

BROWN COMMITMENT X7787

### MCPHEE FIREWORK 418

BROWN MS DESTINATION T6986

TENDER	BW
★★★	78
IMF	WW
2.46	708
REA	YW
13.72	1204
SCR	ADG
36.64	3.09

HB	GM	CED	BW	WW	YW	ADG	DMI	Milk	ME	HPG	CEM	STAY	Marb	YG	CW	REA	FAT
155	56	4	-1.2	81	131	0.32	1.11	25	4	14	3	13	0.8	0.1	46	0.45	0.04

McPhee Homerun Trophy 464 will EPD a big win for your team. He is a son of McPhee Trophy 36 and is a double-bred Brown Commitment X7787. He has the 4th highest actual WW of the offering and ranks in the top 5% of the breed for WW and YWEPDs at 81 and 131. His adj YW is 1204. He has a fantastic Marb score of .80 and a -1.2 BW EPD. He is deeply made with a strong top line.

4

## ANNA TROPHY BOY 102

HM

Tattoo:102 Birth: 7/8/17 REG#: 3932935 CAT:A 100% AR

BROWN COMMITMENT X7787

### MCPHEE TROPHY 36

ROYCE'S SENSATIONAL 14

ROSE'S HOT SHOT 50

### ANNA'S DIAMOND55

ANNA'S PACIFIC ROXY 6

TENDER	BW
★★★	85
IMF	WW
2.33	744
REA	YW
12.99	1234
SCR	ADG
37.77	3.05

HB	GM	CED	BW	WW	YW	ADG	DMI	Milk	ME	HPG	CEM	STAY	Marb	YG	CW	REA	FAT
140	58	1	0.6	90	150	0.37	1.18	20	6	12	2	11	0.67	0.07	60	0.31	-0.01

Anna's Trophy Boy 102 is a true winner in this breed-leading package. He is thick ended, smooth and long. His performance is grand slam worthy. He ranks in the top 1% of the breed for 5 traits! Look at that Marb EPD too, a .67. He has the 4th highest actual and adj WW of the offering. And all with a modest BW EPD of just .6. His WW and YW EPDs are out of the ball park at 90 and 150. His young dam is a granddaughter of Pacific Pride.



ANNA TROPHY BOY 104

EPD Averages for Non-Parents Under Two Years of Age

100 HB 49 GM 5 CED -2.0 BW 58 WW 90 YW 0.20 ADG 0.63 DMI 21 MILK 1 ME 12 HPG 5 CEM 10 STAY 0.46 MARB 0.02 YG 21 CW 0.11 REA 0.00 FAT



**McPhee Red Angus • Herd Bull Prospects**

**5 MCPHEE TROPHY KING 80**

**EHM**

Tattoo:80 Birth: 7/9/17 REG#: 3932909 CAT:A 100% AR

BROWN COMMITMENT X7787

**MCPHEE TROPHY 36**

ROYCE'S SENSATIONAL 14

MCPHEE TOP COMMITMENT 352

**ROYCE'S TOP STAR 34**

JST RUBY'S ROBIN

TENDER	BW
★★	77
IMF	WW
3.5	611
REA	YW
11.2	1184
SCR	ADG
34.8	3.58

HB	GM	CED	BW	WW	YW	ADG	DMI	Milk	ME	HPG	CEM	STAY	Marb	YG	CW	REA	FAT
137	55	4	-2	72	124	0.33	1.43	33	6	12	2	12	0.86	0.19	41	0.2	0.05

McPhee Trophy King 80 is marked for royalty. He has an elite data profile ranking 7 traits in the top 10 of the breed. Look at the -2.0 BW and a whopping 124 YW EPD. His royal pedigree is filled with breed-leading sires for growth, carcass, and calving ease.

**6 MCPHEE MAGIC 4942**

Tattoo:4942 Birth: 7/13/17 REG#: 3932773 CAT:A 100% AR

MCPHEE TOP COMMITMENT 352

**MCPHEE REMARKABULL 4669**

SCARLET 4064

ROY'S HIGH NOON 3805

**MCPHEE SPARKLE 4933**

MCPHEES DAYDREAM 4366

TENDER	BW
★★	83
IMF	WW
2.31	756
REA	YW
12.07	1166
SCR	ADG
36.93	2.56

HB	GM	CED	BW	WW	YW	ADG	DMI	Milk	ME	HPG	CEM	STAY	Marb	YG	CW	REA	FAT
121	52	2	0.7	82	124	0.26	1.12	19	6	14	5	10	0.43	0.02	44	0.33	-0.01

McPhee Magic 4942 will magically make more pounds on your calves. He has the highest actual WW of the group at 965 pounds. Wow! His W EPD ranks him in the top 1% of the breed and his YW EPD in the top 3%. His dam comes from a strong maternal line and she boast an impressive 107.4 MPPA.

**7 MCPHEE ALL AROUND 4943**

Tattoo:4943 Birth: 7/4/17 REG#: 3932837 CAT:A 100% AR

BROWN COMMITMENT X7787

**MCPHEE TROPHY 36**

ROYCE'S SENSATIONAL 14

MCPHEE REMARKABULL 4669

**MCPHEE DOUBLE DELITE 5250**

MCPHEE SWEETNESS 4521

TENDER	BW
★★★	78
IMF	WW
3.38	665
REA	YW
11.02	1051
SCR	ADG
37.14	2.4

HB	GM	CED	BW	WW	YW	ADG	DMI	Milk	ME	HPG	CEM	STAY	Marb	YG	CW	REA	FAT
125	53	3	-1	68	111	0.27	1.07	27	7	13	3	11	0.64	-0.01	35	0.18	-0.02

McPhee All Around 4943 is just that, an all around good bull. He has a great balance of performance and carcass traits while playing for the calving ease team too. This bull has a long, smooth top line while being deep sided and thick made. He will definitely get the all-around trophy!

**8 MCPHEE THIS IS IT 4945**

Tattoo:4945 Birth: 7/14/17 REG#: 3932771 CAT:A 100% AR

BROWN COMMITMENT X7787

**MCPHEE TROPHY 36**

ROYCE'S SENSATIONAL 14

DZA JOE MAKER 705

**MCPHEE VALLEY DOLL 4956**

DAISY 3940

TENDER	BW
★★★	77
IMF	WW
4.25	663
REA	YW
11.48	1158
SCR	ADG
34.96	3.09

HB	GM	CED	BW	WW	YW	ADG	DMI	Milk	ME	HPG	CEM	STAY	Marb	YG	CW	REA	FAT
126	54	3	-1.2	69	114	0.28	1.17	31	6	11	1	12	0.95	0.21	37	0.1	0.05

McPhee This Is It 4945 has a major potential for growth. His pedigree is stacked with high performance sires and strong maternal dams. His dam posts an impressive MPPA of 107.2. This Is It has an unprecedented balance of performance traits with 6 traits ranking in the top 10% or better of the breed. Just a 77 pound BW with a -1.2 BW EPD up to 114 YW EPD and a great Marb EPD of .95. This Is It!

**9 MCPHEE JUST REWARD 4956**

**EHM**

Tattoo:4956 Birth: 7/13/17 REG#: 3932843 CAT:A 100% AR

BROWN COMMITMENT X7787

**MCPHEE TROPHY 36**

ROYCE'S SENSATIONAL 14

ROSE'S HOT SHOT 50

**MCPHEE STAR 5280**

MCPHEE PRECIOUS 4696

TENDER	BW
★★	83
IMF	WW
3.26	660
REA	YW
11.67	1143
SCR	ADG
38.93	3.01

HB	GM	CED	BW	WW	YW	ADG	DMI	Milk	ME	HPG	CEM	STAY	Marb	YG	CW	REA	FAT
137	55	3	-0.5	72	122	0.31	1.04	24	5	13	2	12	0.74	0.13	42	0.16	0.02

McPhee Just Reward 4956 is a big, wide, and powerful bull. He is a son of the Trophy bull and will surely follow in his father's footsteps. He ranks in the top 10% of the breed for 6 traits. Look at that powerful YW EPD of 122 and with a negative BW EPD to boot.

**10 MCPHEE ALL IN ONE 469**

Tattoo:469 Birth: 7/11/17 REG#: 3932899 CAT:A 100% AR

BROWN JYJ REDEMPTION Y1334

**ROYCE'S DUN RIGHT 44**

LRA DUNNI 211

MCPHEE NEW REVELATION

**MCP SWEETNESS 438**

MCPHEE TEXAS ROSE 361

TENDER	BW
★★★	64
IMF	WW
3.96	620
REA	YW
11.24	1025
SCR	ADG
33.87	2.52

HB	GM	CED	BW	WW	YW	ADG	DMI	Milk	ME	HPG	CEM	STAY	Marb	YG	CW	REA	FAT
140	54	10	-4.6	57	94	0.23	1.01	27	2	12	5	11	1.01	-0.02	20	0.22	0.01

McPhee All In One 469 is an attractive bull that will give you endless "sleep all night" calving ease. His pedigree is stacked with calving ease. He boasts just a 64 pound BW and the second best BW EPD of the group at -4.6. His Marb EPD of 1.01 is impressive in itself, with a ranking in the top 2% of the breed. This bull has the sought after traits wrapped up All In One.

EPD Averages for Non-Parents Under Two Years of Age

100 HB 49 GM 5 CED -2.0 BW 58 WW 90 YW 0.20 ADG 0.63 DMI 21 MILK 1 ME 12 HPG 5 CEM 10 STAY 0.46 MARB 0.02 YG 21 CW 0.11 REA 0.00 FAT

**McPhee Red Angus • Herd Bull Prospects**

**11 MCPHEE JUST REWARDING 4958**  
 Tattoo:4958 Birth: 7/9/17 REG#: 3932835 CAT:A 100% AR

BROWN COMMITMENT X7787

**MCPHEE TROPHY 36**

ROYCE'S SENSATIONAL 14

MCPHEE NEW REVELATION

**MCPHEE SHESA STAR 5260**

MCPHEE RED PEARL 4504

TENDER	BW
★★★★	73
IMF	WW
2.59	640
REA	YW
11.1	1045
SCR	ADG
36.8	2.52

HB	GM	CED	BW	WW	YW	ADG	DMI	Milk	ME	HPG	CEM	STAY	Marb	YG	CW	REA	FAT
133	52	5	-2.6	61	101	0.25	1.06	32	5	13	2	12	0.57	-0.05	27	0.34	0

McPhee Just Rewarding 4958 is a smooth made, thick ended bull with a strong top line. He is a Trophy son and boasts a 73 pound BW and a -2.6 BW EPD. He is a complete package with a great EPD spread. His REA EPD of .34 ranks him in the top 14% of the breed. You will be rewarded when you use this bull on your cows and heifers.

**12 MCPHEE TOP HAND 4946**  
 Tattoo:4946 Birth: 7/20/17 REG#: 3932817 CAT:A 100% AR

MCPHEE TOP COMMITMENT 352

**MCPHEE REMARKABULL 4669**

SCARLET 4064

MCPHEE PACIFIC PRIDE 4127

**MCPHEE PRIDE'S STAR 5099**

MCPHEE RED PEARL 4504

TENDER	BW
★★★	84
IMF	WW
3.24	691
REA	YW
11.28	1127
SCR	ADG
35.16	2.72

HB	GM	CED	BW	WW	YW	ADG	DMI	Milk	ME	HPG	CEM	STAY	Marb	YG	CW	REA	FAT
122	53	1	0.7	76	115	0.25	1.09	20	6	13	4	11	0.71	0.1	39	0.36	0.04

McPhee Top Hand 4946 is a powerfully made, well-balanced bull that brings all the economically important traits to the table. His WW and YW EPDs are in the top 4% and 8% of the breed. His pedigree reflects both growth and carcass breed leading genetics. His dam is a Pacific Pride daughter that posts a 104 MPPA. This bull will definitely be a top hand in your herd.

**13 MCPHEE GOOD CATCH 4965**  
 Tattoo:4965 Birth: 9/10/17 REG#: 3932803 CAT:A 100% AR

BROWN PHENOMENAL Z7310

**BROWN OUTSTANDING C271**

BROWN MS REDEMPTION A7174

DZA JOE MAKER 705

**MCPHEE STARLITE 5083**

MCPHEE SUNLIGHT 4699

TENDER	BW
★★★	78
IMF	WW
3.07	705
REA	YW
13.42	1063
SCR	ADG
36.84	2.24

HB	GM	CED	BW	WW	YW	ADG	DMI	Milk	ME	HPG	CEM	STAY	Marb	YG	CW	REA	FAT
145	52	9	-3.4	64	100	0.22	1.28	17	7	11	5	13	0.81	-0.06	24	0.5	0.02

McPhee Good Catch 4965 is definitely a good catch for your heifers. He is a son of one of our newest herdsires, Brown Outstanding C271. This is his first calf crop and we are really excited about them. His pedigree and breed-leading performance is second to none. Good Catch has a -3.4 BW EPD and an impressive spread of EPDs. He has a good Marb and REA too. He is no big fish story!



**14 MCPHEE SUPERMAN 4955**  
 Tattoo:4955 Birth: 7/18/17 REG#: 3932795 CAT:B 99.9% AR 0.1% XX

MCPHEE TOP COMMITMENT 352

**MCPHEE REMARKABULL 4669**

SCARLET 4064

MCPHEE PACIFIC PRIDE 4127

**MCPHEE DOODROP 5027**

MCPHEE NEW REWARD 4680

TENDER	BW
★★★	77
IMF	WW
1.62	657
REA	YW
11.85	995
SCR	ADG
35.09	2.11

HB	GM	CED	BW	WW	YW	ADG	DMI	Milk	ME	HPG	CEM	STAY	Marb	YG	CW	REA	FAT
116	50	3	-1	66	100	0.21	1.2	25	6	13	5	11	0.33	-0.15	28	0.41	-0.03

McPhee Superman 4955 is a long bodied, well-balanced superhero. He flies in with a negative BW EPD and just keeps going. His dam is a Pacific Pride daughter who is known for growth and carcass traits. He has an impressive MPPA of 108.8. Give your cows a thrill with this superhero!

**15 MCPHEE DYNAMIC 4950**  
 Tattoo:4950 Birth: 7/11/17 REG#: 3932871 CAT:A 100% AR

BROWN REVELATION P7021

**MCPHEE NEW REVELATION**

MCPHEE SMART PICK 4489

LARSON BONANZA 926

**LUCKY CLOVER 4318**

SWEET DREAMS 3663

TENDER	BW
★★★★	80
IMF	WW
1.6	683
REA	YW
11.14	1043
SCR	ADG
37.87	2.24

HB	GM	CED	BW	WW	YW	ADG	DMI	Milk	ME	HPG	CEM	STAY	Marb	YG	CW	REA	FAT
109	49	7	-1.5	55	91	0.23	0.7	28	4	14	6	9	0.24	0.09	23	0.08	0.02

McPhee Dynamic 4950 is very dynamic; energetic and forceful, continuous activity and progress. Your herd will always be moving toward progress. This bull is long bodied and deep sized. His dam is one of the oldest matrons in our herd, a testament to her longevity and production. Use McPhee Dynamic 4950 and keep your herd Dynamic.

EPD Averages for Non-Parents Under Two Years of Age

100 HB 49 GM 5 CED -2.0 BW 58 WW 90 YW 0.20 ADG 0.63 DMI 21 MILK 1 ME 12 HPG 5 CEM 10 STAY 0.46 MARB 0.02 YG 21 CW 0.11 REA 0.00 FAT

# Red Angus Guide to EPDs

**HB** ..... HerdBuilder Index – Need bulls for developing a profitable cowherd and maximizing the value of marketed progeny? Select a bull with a high HB value.

**GM** ..... GridMaster Index – If you market all of your calf crop and want to increase the value of that calf crop, select a bull with a high GM value to maximize your profit.

**CED** ..... Calving Ease Direct – Breeding Heifers? Select bulls with a high CED to increase the probability that the heifers will calve unassisted.

**BW**..... Birth Weight – Predicts differences in birth weight. BW is included in the CED EPD, so simplify your decisions by selecting bulls based on CED instead of BW.

**WW** ..... Weaning Weight and **YW** ..... Yearling Weight – Predicts differences in weight at weaning and yearling. While selection based on these growth measures can increase your payweight, be cautious what the bull's other EPDs are.

**Milk** ..... Milk – Predicts differences in weaning weight of daughter's progeny due to milk production.

**ME** ..... Maintenance Energy – Selecting bulls with a lower ME EPD will decrease the amount of feed his daughters will require to maintain body weight.

**HPG** ... Heifer Pregnancy – Retaining heifers? Select bulls with a high HPG to increase the percentage of exposures that result in a calving observation.

**CEM** .... Calving Ease Maternal – Another number to pay attention to if you are retaining heifers. Selecting bulls with a high CEM will increase the probability of those daughters calving unassisted.

**STAY** .... Stayability – The most important trait if your goal is developing cows that stay productive, thus increasing your profitability. Bulls that have a high Stay EPD are expected to sire daughters that remain productive in the herd until at least 6 years of age.

**MARB** .. Marbling Score – Select bulls with high MARB EPD to increase the number of progeny that grade Choice or Prime.

**YG** ..... Yield Grade – Marketing calves on a grid? Placing selection pressure on YG EPD will decrease the number of YG discounts on grid-marketed progeny.

**CW**..... Carcass Weight – Selecting bulls with a high CW EPD will increase the weight of the hanging carcass, which directly impacts revenue.

**REA** ..... Rib Eye Area – Need to add muscle? Select bulls with a high REA EPD to increase rib eye area, which favorably increases Yield Grade.

**FAT** ..... Backfat – Need to reduce waste in carcasses? Select bulls with a low FAT EPD to reduce backfat, which favorably increases Yield Grade.

**Ranch Tested. Rancher Trusted.**

# Red Angus

(940) 387-3502 | [RedAngus.org](http://RedAngus.org)

*For more information on EPDs, visit [redangus.org](http://redangus.org).*

**McPhee Red Angus • Yearling Bulls**

**16 MCPHEE COMPLETE 4954** HM  
 Tattoo:4954 Birth: 7/10/17 REG#: 3932829 CAT:A 100% AR

BROWN REVELATION P7021

**MCPHEE NEW REVELATION**

MCPHEE SMART PICK 4489

DZA JOE MAKER 705

**MCPHEE BLING 5217**

MCPHEE RED GAL 4671

TENDER	BW
★★★★	86
IMF	VW
4.82	729
REA	YW
12.02	1238
SCR	ADG
37.83	3.17

HB	GM	CED	BW	WW	YW	ADG	DMI	Milk	ME	HPG	CEM	STAY	Marb	YG	CW	REA	FAT
125	56	5	-0.6	68	117	0.3	0.7	31	6	12	3	9	0.96	0.2	39	0.24	0.06

**17 MCPHEE COMPLETE 468** HM  
 Tattoo:468 Birth: 7/3/17 REG#: 3932901 CAT:A 100% AR

BROWN JYJ REDEMPTION Y1334

**ROYCE'S DUN RIGHT 44**

LRA DUNNI 211

MCPHEE NEW REVELATION

**MCP SHESA HOT 441**

MCPHEE DIAMOND 415

TENDER	BW
★★★	75
IMF	VW
2.9	599
REA	YW
12.11	1297
SCR	ADG
37.61	4.35

HB	GM	CED	BW	WW	YW	ADG	DMI	Milk	ME	HPG	CEM	STAY	Marb	YG	CW	REA	FAT
154	58	6	-0.9	74	133	0.37	0.95	25	2	12	5	11	0.83	0.11	49	0.36	0.03

**18 ANNAS POWERHOUSE 104** HM  
 Tattoo:104 Birth: 8/5/17 REG#: 3932937 CAT:A 100% AR

BROWN JYJ REDEMPTION Y1334

**ROYCE'S DUN RIGHT 44**

LRA DUNNI 211

MCPHEE PACIFIC PRIDE 4127

**ANNA'S PACIFIC ROXY 6**

ANNA'S FLICKA 221

TENDER	BW
★★★★	103
IMF	VW
2.91	714
REA	YW
12.34	1189
SCR	ADG
36	2.97

HB	GM	CED	BW	WW	YW	ADG	DMI	Milk	ME	HPG	CEM	STAY	Marb	YG	CW	REA	FAT
137	57	4	1	87	146	0.37	1.26	16	2	11	5	10	0.72	0.11	59	0.25	0

**19 MCPHEE TRULY REWARDING 4951** HM  
 Tattoo:4951 Birth: 7/11/17 REG#: 3932847 CAT:A 100% AR

BROWN COMMITMENT X7787

**MCPHEE TROPHY 36**

ROYCE'S SENSATIONAL 14

MCPHEE NEW REVELATION

**MCPHEE SHESA STAR 5281**

MCPHEE LUCKY LADY 4947

TENDER	BW
★★★	80
IMF	VW
2.91	700
REA	YW
13.14	1170
SCR	ADG
33.87	2.93

HB	GM	CED	BW	WW	YW	ADG	DMI	Milk	ME	HPG	CEM	STAY	Marb	YG	CW	REA	FAT
142	55	2	-0.7	74	123	0.31	1.11	28	5	13	1	13	0.66	0.03	43	0.5	0.02

**20 MCPHEE GOOD DEAL 4957** HM  
 Tattoo:4957 Birth: 9/16/17 REG#: 3932757 CAT:A 100% AR

BROWN PHENOMENAL Z7310

**BROWN OUTSTANDING C271**

BROWN MS REDEMPTION A7174

TRUE GRIT 3482

**MCPHEE SWEETSUPREME 4673**

SUPREMES DREAM 3133

TENDER	BW
★★★	82
IMF	VW
1.74	702
REA	YW
13.02	1349
SCR	ADG
37.04	4.02

HB	GM	CED	BW	WW	YW	ADG	DMI	Milk	ME	HPG	CEM	STAY	Marb	YG	CW	REA	FAT
142	53	5	-1	71	119	0.3	0.98	24	4	10	2	13	0.36	-0.01	40	0.43	0



MCPHEE TRULY REWARDING 4951

**21 MCPHEE THE MAN 4944** HM  
 Tattoo:4944 Birth: 7/9/17 REG#: 3932811 CAT:A 100% AR

MCPHEE TOP COMMITMENT 352

**MCPHEE REMARKABULL 4669**

SCARLET 4064

DZA JOE MAKER 705

**MCPHEE SPECIALTY 5121**

FISCHERS ELIZBETH 239

TENDER	BW
★★★	84
IMF	VW
3.2	666
REA	YW
13.1	1102
SCR	ADG
38.8	2.72

HB	GM	CED	BW	WW	YW	ADG	DMI	Milk	ME	HPG	CEM	STAY	Marb	YG	CW	REA	FAT
113	53	3	0.4	69	107	0.23	0.83	23	8	12	4	10	0.59	-0.04	34	0.27	-0.02

**22 MCPHEE PINNACLE 4952** HM  
 Tattoo:4952 Birth: 7/15/17 REG#: 3932819 CAT:A 100% AR

BROWN REVELATION P7021

**MCPHEE NEW REVELATION**

MCPHEE SMART PICK 4489

MCPHEE PACIFIC PRIDE 4127

**MCPHEE PRIDE N JOY 5066**

MCPHEE PATSY 4575

TENDER	BW
★★★	90
IMF	VW
2.77	735
REA	YW
11.7	1073
SCR	ADG
35	2.11

HB	GM	CED	BW	WW	YW	ADG	DMI	Milk	ME	HPG	CEM	STAY	Marb	YG	CW	REA	FAT
115	52	2	0.7	74	117	0.27	1.23	20	6	14	4	10	0.64	0.09	40	0.33	0.03

**23 MCPHEE TITAN 4947** HM  
 Tattoo:4947 Birth: 7/22/17 REG#: 3932779 CAT:A 100% AR

MCPHEE TOP COMMITMENT 352

**MCPHEE REMARKABULL 4669**

SCARLET 4064

DZA JOE MAKER 705

**MCPHEE GEM 5044**

SHESA REAL DEAL 3946

TENDER	BW
★★★	61
IMF	VW
1.9	658
REA	YW
12.11	1113
SCR	ADG
34.22	2.85

HB	GM	CED	BW	WW	YW	ADG	DMI	Milk	ME	HPG	CEM	STAY	Marb	YG	CW	REA	FAT
125	52	4	-0.2	67	103	0.23	1.02	25	9	12	5	11	0.66	-0.01	31	0.2	-0.01

**24 MCPHEE HESA REWARD 83** EHM  
 Tattoo:83 Birth: 7/16/17 REG#: 3932913 CAT:A 100% AR

BROWN COMMITMENT X7787

**MCPHEE TROPHY 36**

ROYCE'S SENSATIONAL 14

BROWN COMMITMENT X7787

**ROYCE'S SURE BET 51**

LJL JULIAN 3Y

TENDER	BW
★★★★	71
IMF	VW
4.79	706
REA	YW
12.42	1118
SCR	ADG
33.03	2.56

HB	GM	CED	BW	WW	YW	ADG	DMI	Milk	ME	HPG	CEM	STAY	Marb	YG	CW	REA	FAT
147	58	5	-1.9	76	122	0.29	0.89	24	4	12	2	12	1.09	0.04	40	0.29	0.01

EPD Averages for Non-Parents Under Two Years of Age

100 HB 49 GM 5 CED -2.0 BW 58 WW 90 YW 0.20 ADG 0.63 DMI 21 MILK 1 ME 12 HPG 5 CEM 10 STAY 0.46 MARB 0.02 YG 21 CW 0.11 REA 0.00 FAT

**McPhee Red Angus • Yearling Bulls**

**25**

**MCPHEE ALL THAT 4949**

**HM**

Tattoo:4949 Birth: 7/10/17 REG#: 3932821 CAT:A 100% AR

MCPHEE TOP COMMITMENT 352

**MCPHEE REMARKABULL 4669**

SCARLET 4064

MCPHEE PACIFIC PRIDE 4127

**MCPHEE R PRIDE N JOY 5114**

MCPHEE SPARK 4583

TENDER	BW
★★★★	84
IMF	VW
3.56	675
REA	YW
11.02	1052
SCR	ADG
35.83	2.36

HB	GM	CED	BW	WW	YW	ADG	DMI	Milk	ME	HPG	CEM	STAY	Marb	YG	CW	REA	FAT
122	53	2	0.1	71	111	0.25	1.16	19	6	13	5	10	0.8	0	36	0.26	-0.01



MCPHEE ALL THAT 4949

**26**

**MCPHEE DONE GOOD 4960**

Tattoo:4960 Birth: 7/7/17 REG#: 3932855 CAT:A 100% AR

BROWN JYJ REDEMPTION Y1334

**ROYCE'S DUN RIGHT 44**

LRA DUNNI 211

MCPHEE TROPHY 36

**MCPHEE TROPHY GIRL 5311**

MCPHEE PROFILE 4525

TENDER	BW
★★★	73
IMF	VW
3.32	696
REA	YW
13.27	1127
SCR	ADG
36.74	2.68

HB	GM	CED	BW	WW	YW	ADG	DMI	Milk	ME	HPG	CEM	STAY	Marb	YG	CW	REA	FAT
142	55	7	-1.9	71	118	0.29	1.19	23	1	12	6	11	0.92	0.07	38	0.36	0.03

**27**

**MCPHEE JUST REWARDS 119**

Tattoo:119 Birth: 7/11/17 REG#: 3933233 CAT:A 100% AR

BROWN COMMITMENT X7787

**MCPHEE TROPHY 36**

ROYCE'S SENSATIONAL 14

PIE GRIDMASTER 589

**SMR RED ROSE 0702**

FL CHEYENNE ROSE 761

TENDER	BW
★★★	83
IMF	VW
2.64	617
REA	YW
11.84	1079
SCR	ADG
35.87	2.89

HB	GM	CED	BW	WW	YW	ADG	DMI	Milk	ME	HPG	CEM	STAY	Marb	YG	CW	REA	FAT
123	52	2	-0.9	70	113	0.27	1.27	29	4	11	2	12	0.51	0.04	36	0.2	0

**28**

**MCPHEE ON TARGET 4961**

Tattoo:4961 Birth: 7/21/17 REG#: 3932799 CAT:A 100% AR

MCPHEE TOP COMMITMENT 352

**MCPHEE REMARKABULL 4669**

SCARLET 4064

OAK RIDGE MISSION STATEMENT

**MCPHEE DOLL 5006**

ANNA'S FLICKA 221

TENDER	BW
★★★	83
IMF	VW
2.6	668
REA	YW
9.9	1019
SCR	ADG
36.19	2.2

HB	GM	CED	BW	WW	YW	ADG	DMI	Milk	ME	HPG	CEM	STAY	Marb	YG	CW	REA	FAT
104	50	5	-1.3	62	94	0.21	0.82	23	6	11	4	9	0.54	0.08	24	-0.01	0.01

**29**

**MCPHEE DALLEY UP 4948**

Tattoo:4948 Birth: 7/10/17 REG#: 3932815 CAT:A 100% AR

MCPHEE TOP COMMITMENT 352

**MCPHEE REMARKABULL 4669**

SCARLET 4064

MCPHEE TOP COMMITMENT 352

**MCPHEE TOP STAR 5084**

MCPHEE NEW DAY 4329

TENDER	BW
★★★	78
IMF	VW
3.31	644
REA	YW
11.22	995
SCR	ADG
34.83	2.2

HB	GM	CED	BW	WW	YW	ADG	DMI	Milk	ME	HPG	CEM	STAY	Marb	YG	CW	REA	FAT
126	52	4	-1.3	62	93	0.19	1	23	7	13	4	11	0.86	-0.05	23	0.17	-0.02

**30**

**MCPHEE BULLSEYE 85**

**HM**

Tattoo:85 Birth: 8/5/17 REG#: 3932911 CAT:A 100% AR

BROWN JYJ REDEMPTION Y1334

**ROYCE'S DUN RIGHT 44**

LRA DUNNI 211

DZA 1918

**ROYCE'S DIVINE 41**

JST RUBY'S ROBIN

TENDER	BW
★★★	65
IMF	VW
3.14	653
REA	YW
10.94	1097
SCR	ADG
34.68	2.76

HB	GM	CED	BW	WW	YW	ADG	DMI	Milk	ME	HPG	CEM	STAY	Marb	YG	CW	REA	FAT
118	51	8	-3.8	59	98	0.24	1.24	27	4	11	6	9	0.7	0.01	23	0.06	-0.01



MCPHEE DALLEY UP 4948

**31**

**MCPHEE TRUE REWARDS 4959**

**HM**

Tattoo:4959 Birth: 7/25/17 REG#: 3932867 CAT:A 100% AR

BROWN COMMITMENT X7787

**MCPHEE TROPHY 36**

ROYCE'S SENSATIONAL 14

MCPHEE NEW REVELATION

**MCPHEE GOTCHA 5298**

COWGIRL DREAM 4319

TENDER	BW
★★★	80
IMF	VW
3.88	687
REA	YW
10.76	1105
SCR	ADG
30.32	2.6

HB	GM	CED	BW	WW	YW	ADG	DMI	Milk	ME	HPG	CEM	STAY	Marb	YG	CW	REA	FAT
132	55	4	-1.4	62	105	0.27	0.75	32	5	13	3	11	0.84	0.04	31	0.24	0.01

**32**

**MCPHEE TURBOMAX 81**

Tattoo:81 Birth: 9/13/17 REG#: 3932905 CAT:A 100% AR

MCPHEE TOP COMMITMENT 352

**MCPHEE REMARKABULL 4669**

SCARLET 4064

BECKTON JULIAN P040 G2

**LJL JULIAN 3Y**

RRSO AQUILA 0304

TENDER	BW
★★★★	86
IMF	VW
3.67	712
REA	YW
11.97	1109
SCR	ADG
36.94	2.48

HB	GM	CED	BW	WW	YW	ADG	DMI	Milk	ME	HPG	CEM	STAY	Marb	YG	CW	REA	FAT
127	55	5	0.4	72	113	0.26	0.64	17	5	12	6	9	0.76	0	38	0.14	-0.02

EPD Averages for Non-Parents Under Two Years of Age

100 HB 49 GM 5 CED -2.0 BW 58 WW 90 YW 0.20 ADG 0.63 DMI 21 MILK 1 ME 12 HPG 5 CEM 10 STAY 0.46 MARB 0.02 YG 21 CW 0.11 REA 0.00 FAT

**McPhee Red Angus • Yearling Bulls**

**33**

**MCPHEE DONE IT 82**

Tattoo:82 Birth: 7/31/17 REG#: 3932907 CAT:A 100% AR

BROWN JYJ REDEMPTION Y1334

**ROYCE'S DUN RIGHT 44**

LRA DUNNI 211

OAK RIDGE MISSION STATEMENT

**MCPHEE COUNTRYGIRL 5021**

SILVEIRAS CARLOTTA 5363

TENDER	BW
★★★★	78
IMF	VW
2.82	644
REA	YW
12.06	989
SCR	ADG
33.51	2.15

HB	GM	CED	BW	WW	YW	ADG	DMI	Milk	ME	HPG	CEM	STAY	Marb	YG	CW	REA	FAT
101	50	8	-3.1	54	90	0.22	1.08	22	1	10	6	8	0.65	0.08	19	0.22	0.05

**35**

**MCPHEE TITAN 4962**

Tattoo:4962 Birth: 7/22/17 REG#: 3932875 CAT:A 100% AR

MCPHEE TOP COMMITMENT 352

**MCPHEE REMARKABULL 4669**

SCARLET 4064

DZA JOE MAKER 705

**MCPHEE GEM 5044**

SHESA REAL DEAL 3946

TENDER	BW
★★★	60
IMF	VW
3.32	611
REA	YW
9.21	956
SCR	ADG
34.22	2.15

HB	GM	CED	BW	WW	YW	ADG	DMI	Milk	ME	HPG	CEM	STAY	Marb	YG	CW	REA	FAT
125	52	4	-0.2	67	103	0.23	1.02	25	9	12	5	11	0.66	-0.01	31	0.2	-0.01

**37**

**MCPHEE RIGHT TIME 4953**

Tattoo:4953 Birth: 8/18/17 REG#: 3932841 CAT:B 99.9% AR 0.1% XX

BROWN JYJ REDEMPTION Y1334

**ROYCE'S DUN RIGHT 44**

LRA DUNNI 211

ROSE'S HOT SHOT 50

**MCPHEE TOP GIRL 5289**

MCPHEE NEW REWARD 4680

TENDER	BW
★★★	75
IMF	VW
4.06	633
REA	YW
10.35	1077
SCR	ADG
32.1	2.76

HB	GM	CED	BW	WW	YW	ADG	DMI	Milk	ME	HPG	CEM	STAY	Marb	YG	CW	REA	FAT
139	54	8	-3.6	60	100	0.25	1.14	22	2	12	7	10	1.06	0.04	25	-0.03	-0.01

**38**

**MCPHEE GOOD CATCH 466**

Tattoo:466 Birth: 7/20/17 REG#: 3932897 CAT:A 100% AR

BROWN JYJ REDEMPTION Y1334

**ROYCE'S DUN RIGHT 44**

LRA DUNNI 211

MCPHEE TOP HONOR 4658

**MCP EYE CANDY 436**

MCPHEE SHINNING STAR 372

TENDER	BW
★★	80
IMF	VW
2.85	608
REA	YW
10.18	1033
SCR	ADG
34.16	2.64

HB	GM	CED	BW	WW	YW	ADG	DMI	Milk	ME	HPG	CEM	STAY	Marb	YG	CW	REA	FAT
125	52	7	-1.8	58	95	0.23	1.07	23	2	12	6	10	0.81	0	24	0.13	-0.01

**40**

**MCPHEE CHOICE PICK 298**

Tattoo:298 Birth: 8/6/17 REG#: 3932923 CAT:A 100% AR

BROWN JYJ REDEMPTION Y1334

**ROYCE'S DUN RIGHT 44**

LRA DUNNI 211

MCPHEE NEW REVELATION

**MIC STAR 287**

MCPHEE PERFECT 249

TENDER	BW
★★★★	73
IMF	VW
2.7	621
REA	YW
9.96	1026
SCR	ADG
34.71	2.52

HB	GM	CED	BW	WW	YW	ADG	DMI	Milk	ME	HPG	CEM	STAY	Marb	YG	CW	REA	FAT
120	51	8	-2.9	59	96	0.23	1.24	29	3	12	6	10	0.76	0.08	23	0.14	0.03

**34**

**MCPHEE MR INCREDIBLE 467**

Tattoo:467 Birth: 8/1/17 REG#: 3932883 CAT:A 100% AR

MCPHEE TOP COMMITMENT 352

**MCPHEE REMARKABULL 4669**

SCARLET 4064

MCPHEE POT OF GOLD 3991

**MCPHEE RAINBOWBRITE 384**

MCPHEE SHESA MARIO 315

TENDER	BW
★★★	81
IMF	VW
3.72	753
REA	YW
10.37	909
SCR	ADG
35.55	0.98

HB	GM	CED	BW	WW	YW	ADG	DMI	Milk	ME	HPG	CEM	STAY	Marb	YG	CW	REA	FAT
99	47	1	-0.2	67	82	0.09	1.24	20	7	11	3	11	0.72	-0.06	17	0.19	-0.01

**36**

**MCPHEE COWBOY 117**

Tattoo:117 Birth: 7/29/17 REG#: 3933239 CAT:A 100% AR

BROWN JYJ REDEMPTION Y1334

**ROYCE'S DUN RIGHT 44**

LRA DUNNI 211

MCPHEE TOP COMMITMENT 352

**ROSE'S EARLY GIRL 42**

ROSE'S SUNSHINE 31

TENDER	BW
★★	83
IMF	VW
3.68	694
REA	YW
11.73	928
SCR	ADG
33.45	1.46

HB	GM	CED	BW	WW	YW	ADG	DMI	Milk	ME	HPG	CEM	STAY	Marb	YG	CW	REA	FAT
134	51	8	-2.5	57	84	0.17	1.1	24	3	12	6	12	1.05	0.08	16	0.12	0.04



MCPHEE RIGHT TIME 4953

**39**

**MCPHEE POWERED UP 4963**

Tattoo:4963 Birth: 9/9/17 REG#: 3932759 CAT:B 99.8% AR 0.2% XX

MCPHEE TOP COMMITMENT 352

**MCPHEE REMARKABULL 4669**

SCARLET 4064

GOLDEN BOY 3533

**MCPHEE NEW REWARD 4680**

ENCHANTING 3483

TENDER	BW
★★★	82
IMF	VW
1.57	598
REA	YW
12.8	1082
SCR	ADG
39.81	3.01

HB	GM	CED	BW	WW	YW	ADG	DMI	Milk	ME	HPG	CEM	STAY	Marb	YG	CW	REA	FAT
121	50	5	-1.7	53	90	0.23	0.69	25	6	13	6	11	0.3	-0.14	22	0.41	-0.02

**41**

**MCPHEE DALLEY UP 465**

Tattoo:465 Birth: 8/8/17 REG#: 3932895 CAT:A 100% AR

BROWN JYJ REDEMPTION Y1334

**ROYCE'S DUN RIGHT 44**

LRA DUNNI 211

MCPHEE NEW REVELATION

**MCP STAR STRUCK 435**

MCPHEE RAINBOWBRITE 384

TENDER	BW
★★★	69
IMF	VW
2.56	633
REA	YW
9.69	999
SCR	ADG
32.77	2.28

HB	GM	CED	BW	WW	YW	ADG	DMI	Milk	ME	HPG	CEM	STAY	Marb	YG	CW	REA	FAT
119	49	6	-2.8	62	95	0.2	1.42	28	3	12	5	11	0.71	0.11	22	0.16	0.05

EPD Averages for Non-Parents Under Two Years of Age

100 HB 49 GM 5 CED -2.0 BW 58 WW 90 YW 0.20 ADG 0.63 DMI 21 MILK 1 ME 12 HPG 5 CEM 10 STAY 0.46 MARB 0.02 YG 21 CW 0.11 REA 0.00 FAT

**McPhee Red Angus • Yearling Bulls**

**42**

**MCPHEE SLEEP EASY 4964**

Tattoo:4964 Birth: 8/9/17 REG#: 3932825 CAT:A 100% AR

MCPHEE TOP COMMITMENT 352

**MCPHEE REMARKABULL 4669**

SCARLET 4064

DZA JOE MAKER 705

**MCPHEE SPARKLE 5230**

COWGIRL DREAM 4319

TENDER	BW
★★★	71
IMF	WW
2.16	585
REA	YW
12.2	918
SCR	ADG
34.81	2.07

HB	GM	CED	BW	WW	YW	ADG	DMI	Milk	ME	HPG	CEM	STAY	Marb	YG	CW	REA	FAT
104	49	6	-2.5	53	80	0.17	0.98	27	7	13	5	10	0.49	-0.1	14	0.29	-0.01

**44**

**MCPHEE WESTERN 118**

Tattoo:118 Birth: 8/3/17 REG#: 3933249 CAT:A 100% AR

BROWN JYJ REDEMPTION Y1334

**ROYCE'S DUN RIGHT 44**

LRA DUNNI 211

MCPHEE REMARKABULL 4669

**ROSE'S NEW STAR 84**

MCPHEE'S SPOTLIGHT 25

**HM**

TENDER	BW
★★	59
IMF	WW
2.9	498
REA	YW
9.61	875
SCR	ADG
31.61	2.36

HB	GM	CED	BW	WW	YW	ADG	DMI	Milk	ME	HPG	CEM	STAY	Marb	YG	CW	REA	FAT
122	52	7	-1.2	69	108	0.25	1.27	24	4	12	6	10	0.73	0.02	33	0.2	0

**46**

**MCPHEE COWBOYUP 120**

Tattoo:120 Birth: 9/13/17 REG#: 3933247 CAT:A 100% AR

BROWN JYJ REDEMPTION Y1334

**ROYCE'S DUN RIGHT 44**

LRA DUNNI 211

RED DODGE 7210

**ECHO ZINA 5114**

SMR DINAH

TENDER	BW
★★★	77
IMF	WW
4.17	611
REA	YW
10.27	951
SCR	ADG
32.94	2.11

HB	GM	CED	BW	WW	YW	ADG	DMI	Milk	ME	HPG	CEM	STAY	Marb	YG	CW	REA	FAT
139	52	6	-2.4	63	99	0.23	1.02	20	1	12	8	11	0.71	0.04	25	0.16	0.01

**43**

**MCPHEE TOP MARKS 296**

Tattoo:296 Birth: 11/4/17 REG#: 3932921 CAT:A 100% AR

MCPHEE TOP COMMITMENT 352

**MCPHEE REMARKABULL 4669**

SCARLET 4064

BROWN COMMITMENT X7787

**MCPHEE RUBY 279**

MCPHEE TOTAL STAR 36

TENDER	BW
★★★	83
IMF	WW
2.95	780
REA	YW
12	1152
SCR	ADG
31.62	2.32

HB	GM	CED	BW	WW	YW	ADG	DMI	Milk	ME	HPG	CEM	STAY	Marb	YG	CW	REA	FAT
128	54	3	0.3	80	116	0.23	0.74	20	6	13	3	11	0.82	0.04	39	0.27	0.01

**45**

**MCPHEE DARN GOOD 297**

Tattoo:297 Birth: 8/8/17 REG#: 3932925 CAT:A 100% AR

BROWN PHENOMENAL Z7310

**BROWN OUTSTANDING C271**

BROWN MS REDEMPTION A7174

QUANTUM 2491

**DAYDREAM 203**

MIC FRAN 158

**EHM**

TENDER	BW
★★★	79
IMF	WW
2.24	556
REA	YW
11.39	877
SCR	ADG
34.77	1.99

HB	GM	CED	BW	WW	YW	ADG	DMI	Milk	ME	HPG	CEM	STAY	Marb	YG	CW	REA	FAT
111	47	11	-4.9	33	53	0.12	0.76	24	7	9	5	11	0.57	-0.16	-5	0.1	-0.03

**47**

**ANNAS DESTINED 103**

Tattoo:103 Birth: 9/29/17 REG#: 3932939 CAT:B 99.7% AR 0.3% XX

BROWN PHENOMENAL Z7310

**BROWN OUTSTANDING C271**

BROWN MS REDEMPTION A7174

MCPHEE CROSSFIRE 4228

**ANNA'S FIRESTORM 7**

SILVEIRAS LOLA 7396

TENDER	BW
★★★	80
IMF	WW
2.46	601
REA	YW
11.72	933
SCR	ADG
37.46	2.07

HB	GM	CED	BW	WW	YW	ADG	DMI	Milk	ME	HPG	CEM	STAY	Marb	YG	CW	REA	FAT
131	49	7	-3	54	82	0.18	1.08	14	3	12	2	13	0.59	-0.1	14	0.37	0



EPD Averages for Non-Parents Under Two Years of Age

100 HB	49 GM	5 CED	-2.0 BW	58 WW	90 YW	0.20 ADG	0.63 DMI	21 MILK	1 ME	12 HPG	5 CEM	10 STAY	0.46 MARB	0.02 YG	21 CW	0.11 REA	0.00 FAT
--------	-------	-------	---------	-------	-------	----------	----------	---------	------	--------	-------	---------	-----------	---------	-------	----------	----------



# McPhee Red Angus • Bianchi Bulls

Bianchi Ranches is owned and operated by Robert, Chris, and Erica Bianchi along with Justin Click. We are located in the foothills of Gilroy, Calif. We strive to produce top quality bulls in many different breeds to benefit commercial cattlemen throughout the Western States. Our cattle are all raised in foothills under the same conditions as our entire commercial cattle herd.



Red Angus Cattle have been one of our main focuses for the last several years as we strive to better our cow herd and the bulls we have to offer. We would like to thank McPhee Red Angus and the entire McPhee Family for allowing us to market our fall bull calves alongside theirs.

**48** **EB POWR EYE 2269**  
Tattoo:2269 Birth: 10/15/17 REG#: 3895195 CAT:A 100% AR

RED SOO LINE POWER EYE 161X	
<b>WCR POWER EYE 5041C</b>	<b>TENDER</b>
HARMONY'S MISS STONY 1229	★★★
RED LLLL CH CANYON T100	IMF
<b>RED SOO LINE BANE BERRY 9022</b>	1.99
	REA
	12.08
	SCR
	35
	BW
	74
	WW
	715
	YW
	1208
	ADG
	3.14

HB	GM	CED	BW	WW	YW	ADG	DMI	Milk	ME	HPG	CEM	STAY	Marb	YG	CW	REA	FAT
94	47	2	0	54	85	0.19	0.64	13	-7	13	2	9	0.25	0.11	21	-0.3	-0.01

This calf has impressed us since day one! Out of our cornerstone donor, Red Soo Line Baneberry. His sisters in production do not disappoint and have amazing udder quality. He is halter broke.

**49** **EB POWER EYE 2270** **HM**  
Tattoo:2270 Birth: 12/18/17 REG#: 3895203 CAT:A 100% AR

RED SOO LINE POWER EYE 161X	
<b>WCR POWER EYE 5041C</b>	<b>TENDER</b>
HARMONY'S MISS STONY 1229	★★★
SILVEIRAS RED RUBY 9621	IMF
<b>EB ROSE 2149</b>	2.42
	REA
	10.91
	SCR
	32
	BW
	72
	WW
	955
	YW
	973
	ADG
	1.36

HB	GM	CED	BW	WW	YW	ADG	DMI	Milk	ME	HPG	CEM	STAY	Marb	YG	CW	REA	FAT
102	51	2	-0.3	65	108	0.27	0.64	14	1	12	4	8	0.27	0.09	34	0.03	0

These calves are top quality calves out of our new herd sire Power Eye, they sure don't disappoint. Low in birthweight and fast growers. Both are halter broke.

**50** **EB POWER EYE 2268**  
Tattoo:2268 Birth: 11/12/17 REG#: 3895201 CAT:A 100% AR

RED SOO LINE POWER EYE 161X	
<b>WCR POWER EYE 5041C</b>	<b>TENDER</b>
HARMONY'S MISS STONY 1229	★★★
SILVEIRAS RED RUBY 9621	IMF
<b>BR ROSE 2223</b>	1.96
	REA
	11.83
	SCR
	30
	BW
	72
	WW
	847
	YW
	893
	ADG
	1.03

HB	GM	CED	BW	WW	YW	ADG	DMI	Milk	ME	HPG	CEM	STAY	Marb	YG	CW	REA	FAT
105	52	2	0	72	118	0.29	0.64	10	1	12	4	8	0.26	0.14	41	-0.02	0.01



EPD Averages for Non-Parents Under Two Years of Age

100 HB	49 GM	5 CED	-2.0 BW	58 WW	90 YW	0.20 ADG	0.63 DMI	21 MILK	1 ME	12 HPG	5 CEM	10 STAY	0.46 MARB	0.02 YG	21 CW	0.11 REA	0.00 FAT
--------	-------	-------	---------	-------	-------	----------	----------	---------	------	--------	-------	---------	-----------	---------	-------	----------	----------

# McPhee Red Angus

## Open Yearling Heifers



**MCPHEE Red Angus • Open Yearling Heifers**

**52** **MCPHEE WONDER WOMAN 5416**  
 Tattoo:5416 Birth: 7/11/17 REG#: 3932793 CAT:B 99.9% AR 0.1% XX

MCPHEE TOP COMMITMENT 352

**MCPHEE REMARKABULL 4669**  
 SCARLET 4064  
 MCPHEE PACIFIC PRIDE 4127

**MCPHEE CUTIE PIE 4991**  
 MCPHEE RED GAL 4647

TENDER	BW
	78
IMF	WW
	614
REA	YW
	973
SCR	ADG
	2.19

HB	GM	CED	BW	WW	YW	ADG	DMI	Milk	ME	HPG	CEM	STAY	Marb	YG	CW	REA	FAT
121	55	0	2.7	89	138	0.3	1.26	18	7	13	4	9	0.68	0.05	55	0.3	-0.01

**53** **MCPHEE POWER GIRL 5406**  
 Tattoo:5406 Birth: 7/12/17 REG#: 3932791 CAT:A 100% AR

BROWN REVELATION P7021

**MCPHEE NEW REVELATION**  
 MCPHEE SMART PICK 4489  
 MCPHEE PACIFIC PRIDE 4127

**MCPHEE FLOWERGIRL 4997**  
 MCPHEE HIGHLITE 4475

TENDER	BW
	73
IMF	WW
	525
REA	YW
	890
SCR	ADG
	2.22

HB	GM	CED	BW	WW	YW	ADG	DMI	Milk	ME	HPG	CEM	STAY	Marb	YG	CW	REA	FAT
128	55	3	-0.9	73	122	0.31	1.15	24	5	15	4	10	0.69	0.06	42	0.38	0.02

**54** **MCPHEE DAYLILLY 5390**  
 Tattoo:5390 Birth: 8/18/17 REG#: 3932865 CAT:A 100% AR

BROWN JYJ REDEMPTION Y1334

**ROYCE'S DUN RIGHT 44**  
 LRA DUNNI 211  
 MCPHEE NEW REVELATION

**MCPHEE R DELITE 5327**  
 MCPHEE R DELIGHT 5212

TENDER	BW
	75
IMF	WW
	558
REA	YW
	1000
SCR	ADG
	2.76

HB	GM	CED	BW	WW	YW	ADG	DMI	Milk	ME	HPG	CEM	STAY	Marb	YG	CW	REA	FAT
148	55	7	-2.3	71	120	0.31	1.23	26	2	13	5	11	0.87	0.08	39	0.25	0.02

**55** **MCPHEE LUCKY 5407**  
 Tattoo:5407 Birth: 7/15/17 REG#: 3932813 CAT:A 100% AR

MCPHEE TOP COMMITMENT 352

**MCPHEE REMARKABULL 4669**  
 SCARLET 4064  
 OAK RIDGE MISSION STATEMENT

**MCPHEE R AND R 5072**  
 DONNA 3319

TENDER	BW
	81
IMF	WW
	561
REA	YW
	857
SCR	ADG
	1.79

HB	GM	CED	BW	WW	YW	ADG	DMI	Milk	ME	HPG	CEM	STAY	Marb	YG	CW	REA	FAT
125	52	5	-0.7	62	100	0.24	0.66	21	6	13	5	10	0.55	0	29	0.21	0

**56** **MCPHEE STAR 5402**  
 Tattoo:5402 Birth: 7/6/17 REG#: 3932755 CAT:A 100% AR

MCPHEE TOP COMMITMENT 352

**MCPHEE REMARKABULL 4669**  
 SCARLET 4064  
 TRUE GRIT 3482

**MCPHEE RED GAL 4671**  
 LUANNE 3312

TENDER	BW
	76
IMF	WW
	549
REA	YW
	866
SCR	ADG
	1.93

HB	GM	CED	BW	WW	YW	ADG	DMI	Milk	ME	HPG	CEM	STAY	Marb	YG	CW	REA	FAT
100	50	5	-0.4	61	92	0.19	0.49	27	6	11	5	9	0.46	0.03	24	0.11	0



**57** **MCPHEE SUMMER 5397**  
 Tattoo:5397 Birth: 7/21/17 REG#: 3932753 CAT:A 100% AR

MCPHEE TOP COMMITMENT 352

**MCPHEE REMARKABULL 4669**  
 SCARLET 4064  
 TRUE GRIT 3482

**MCPHEE DESIGN 4629**  
 TOWN MODEL 2230

TENDER	BW
	73
IMF	WW
	561
REA	YW
	878
SCR	ADG
	1.93

HB	GM	CED	BW	WW	YW	ADG	DMI	Milk	ME	HPG	CEM	STAY	Marb	YG	CW	REA	FAT
92	51	5	-0.8	63	93	0.19	0.57	26	5	12	4	7	0.49	-0.06	24	0.11	-0.03

**58** **MCPHEE ORCHID 457**  
 Tattoo:457 Birth: 8/25/17 REG#: 3932893 CAT:A 100% AR

BROWN JYJ REDEMPTION Y1334

**ROYCE'S DUN RIGHT 44**  
 LRA DUNNI 211  
 MCPHEE TOP HONOR 4658

**MCP SWEET SUMMER 434**  
 MCPHEE RUBY 374

TENDER	BW
	77
IMF	WW
	548
REA	YW
	1003
SCR	ADG
	2.84

HB	GM	CED	BW	WW	YW	ADG	DMI	Milk	ME	HPG	CEM	STAY	Marb	YG	CW	REA	FAT
127	55	5	-0.4	72	121	0.31	1.22	20	2	11	6	10	0.85	0.15	42	0.08	0.02

**59** **MCPHEE FALL 5412**  
 Tattoo:5412 Birth: 7/6/17 REG#: 3932767 CAT:A 100% AR

MCPHEE TOP COMMITMENT 352

**MCPHEE REMARKABULL 4669**  
 SCARLET 4064  
 TRUE GRIT 3482

**MCPHEE STAWBERRY 4666**  
 SUGAR N SPICE 3961

TENDER	BW
	83
IMF	WW
	526
REA	YW
	860
SCR	ADG
	2.03

HB	GM	CED	BW	WW	YW	ADG	DMI	Milk	ME	HPG	CEM	STAY	Marb	YG	CW	REA	FAT
110	49	5	0.4	61	86	0.16	0.62	28	6	12	5	10	0.33	-0.09	22	0.24	-0.02

EPD Averages for Non-Parents Under Two Years of Age  
 100 HB 49 GM 5 CED -2.0 BW 58 WW 90 YW 0.20 ADG 0.63 DMI 21 MILK 1 ME 12 HPG 5 CEM 10 STAY 0.46 MARB 0.02 YG 21 CW 0.11 REA 0.00 FAT

**Mcphee Red Angus • Open Yearling Heifers**

**60 MCPHEE SHES GOOD 5401**  
 Tattoo:5401 Birth: 7/26/17 REG#: 3932833 CAT:A 100% AR

BROWN JYJ REDEMPTION Y1334

**ROYCE'S DUN RIGHT 44**  
 LRA DUNNI 211  
 MCPHEE TOP HONOR 4658

**MCPHEE FULL BLOOM 5269**  
 MCPHEE HOT PICK 4459

TENDER	BW
	89
IMF	VW
	605
REA	YW
	837
SCR	ADG
	1.42

HB	GM	CED	BW	WW	YW	ADG	DMI	Milk	ME	HPG	CEM	STAY	Marb	YG	CW	REA	FAT
122	52	5	0.8	73	112	0.25	1.29	18	2	12	6	10	0.78	0.09	38	0.15	0.01

**61 MCPHEE PRETTY THING 5385**  
 Tattoo:5385 Birth: 8/14/17 REG#: 3932827 CAT:B 99.9% AR 0.1% XX

BROWN JYJ REDEMPTION Y1334

**ROYCE'S DUN RIGHT 44**  
 LRA DUNNI 211  
 CK TOP SHOT 1007

**MCPHEE STAR POWER 5223**  
 MCPHEE SPECIAL 4589

TENDER	BW
	71
IMF	VW
	510
REA	YW
	881
SCR	ADG
	2.27

HB	GM	CED	BW	WW	YW	ADG	DMI	Milk	ME	HPG	CEM	STAY	Marb	YG	CW	REA	FAT
124	52	8	-2.3	68	110	0.26	1.17	21	1	12	5	9	0.67	0.05	32	0.09	0

**62 MCPHEE ANNA 5395**  
 Tattoo:5395 Birth: 7/16/17 REG#: 3932777 CAT:A 100% AR

MCPHEE TOP COMMITMENT 352

**MCPHEE REMARKABULL 4669**  
 SCARLET 4064  
 DZA JOE MAKER 705

**MCPHEE RIGHT PICK 4965**  
 MCPHEE PRECIOUS 4689

TENDER	BW
	68
IMF	VW
	480
REA	YW
	824
SCR	ADG
	2.09

HB	GM	CED	BW	WW	YW	ADG	DMI	Milk	ME	HPG	CEM	STAY	Marb	YG	CW	REA	FAT
119	50	5	-1.9	57	89	0.2	0.82	25	7	12	4	11	0.55	-0.05	20	0.22	-0.01

**63 MCPHEE COWGIRL 5391**  
 Tattoo:5391 Birth: 8/17/17 REG#: 3932851 CAT:A 100% AR

BROWN JYJ REDEMPTION Y1334

**ROYCE'S DUN RIGHT 44**  
 LRA DUNNI 211  
 MCPHEE TOP HONOR 4658

**MCPHEE BELL 5253**  
 MCPHEE PRIDE N JOY 5066

TENDER	BW
	70
IMF	VW
	584
REA	YW
	852
SCR	ADG
	1.64

HB	GM	CED	BW	WW	YW	ADG	DMI	Milk	ME	HPG	CEM	STAY	Marb	YG	CW	REA	FAT
128	53	6	-1	75	116	0.25	1.42	19	2	12	6	10	0.87	0.08	37	0.19	0.01



**64 ROSES DAZZLE 114**  
 Tattoo:114 Birth: 8/14/17 REG#: 3933237 CAT:A 100% AR

BROWN PHENOMENAL Z7310

**BROWN OUTSTANDING C271**  
 BROWN MS REDEMPTION A7174  
 MCPHEE TOP COMMITMENT 352

**ROSE'S TOP DREAM 44**  
 R DREAMIN 4139

TENDER	BW
	74
IMF	VW
	524
REA	YW
	804
SCR	ADG
	1.69

HB	GM	CED	BW	WW	YW	ADG	DMI	Milk	ME	HPG	CEM	STAY	Marb	YG	CW	REA	FAT
156	52	10	-5.1	57	91	0.21	1.13	19	4	12	4	14	0.85	-0.07	16	0.28	0

**65 MCPHEE DOUBLE DELITE 462**  
 Tattoo:462 Birth: 7/31/17 REG#: 3932903 CAT:A 100% AR

BROWN JYJ REDEMPTION Y1334

**ROYCE'S DUN RIGHT 44**  
 LRA DUNNI 211  
 BROWN COMMITMENT X7787

**MCPHEE CHARITY 428**  
 MCPHEE FANCY 366

TENDER	BW
	59
IMF	VW
	446
REA	YW
	799
SCR	ADG
	2.21

HB	GM	CED	BW	WW	YW	ADG	DMI	Milk	ME	HPG	CEM	STAY	Marb	YG	CW	REA	FAT
141	54	8	-2.8	64	102	0.24	1.13	25	1	12	6	11	0.95	0.01	27	0.22	0.01

**66 ANNAS SPICE 100**  
 Tattoo:100 Birth: 7/13/17 REG#: 3932927 CAT:A 100% AR

BROWN REVELATION P7021

**MCPHEE NEW REVELATION**  
 MCPHEE SMART PICK 4489  
 MCPHEE TOP COMMITMENT 352

**ANNA'S DAFFADILL 14**  
 LAZY J & J DAISEY MAE 77

TENDER	BW
	73
IMF	VW
	505
REA	YW
	749
SCR	ADG
	1.47

HB	GM	CED	BW	WW	YW	ADG	DMI	Milk	ME	HPG	CEM	STAY	Marb	YG	CW	REA	FAT
119	50	5	-3	58	90	0.2	0.99	30	2	14	2	11	0.64	-0.01	19	0.38	0.03

**67 MCPHEE SWEETNESS 5389**  
 Tattoo:5389 Birth: 9/10/17 REG#: 3932857 CAT:B 99.9% AR 0.1% XX

BROWN JYJ REDEMPTION Y1334

**ROYCE'S DUN RIGHT 44**  
 LRA DUNNI 211  
 BROWN COMMITMENT X7787

**MCPHEE CLASSICAL 5317**  
 MCPHEE NEW REWARD 4680

TENDER	BW
	77
IMF	VW
	530
REA	YW
	913
SCR	ADG
	2.39

HB	GM	CED	BW	WW	YW	ADG	DMI	Milk	ME	HPG	CEM	STAY	Marb	YG	CW	REA	FAT
146	54	8	-2.9	57	95	0.24	0.82	24	1	12	5	12	0.98	0.01	23	0.25	0.02

EPD Averages for Non-Parents Under Two Years of Age  
 100 HB 49 GM 5 CED -2.0 BW 58 WW 90 YW 0.20 ADG 0.63 DMI 21 MILK 1 ME 12 HPG 5 CEM 10 STAY 0.46 MARB 0.02 YG 21 CW 0.11 REA 0.00 FAT

**Mcphee Red Angus • Open Yearling Heifers**

**68 MCPHEE HALO 5417**  
 Tattoo:5417 Birth: 8/3/17 REG#: 3932853 CAT:A 100% AR

BROWN JYJ REDEMPTION Y1334  
**ROYCE'S DUN RIGHT 44**  
 LRA DUNNI 211  
 BROWN COMMITMENT X7787  
**MCPHEE TEXAS 5257**  
 BOLA VICILA R205

TENDER	BW
	67
IMF	WW
	475
REA	YW
	846
SCR	ADG
	2.29

HB	GM	CED	BW	WW	YW	ADG	DMI	Milk	ME	HPG	CEM	STAY	Marb	YG	CW	REA	FAT
138	53	7	-3.2	65	106	0.25	1.19	22	1	11	3	12	0.87	0	28	0.2	0

**69 MCPHEE LILLY 5386**  
 Tattoo:5386 Birth: 7/6/17 REG#: 3932859 CAT:A 100% AR

BROWN JYJ REDEMPTION Y1334  
**ROYCE'S DUN RIGHT 44**  
 LRA DUNNI 211  
 MCPHEE TROPHY 36  
**MCPHEE AWARD 5333**  
 MCPHEE DOLL 5006

TENDER	BW
	69
IMF	WW
	449
REA	YW
	868
SCR	ADG
	2.62

HB	GM	CED	BW	WW	YW	ADG	DMI	Milk	ME	HPG	CEM	STAY	Marb	YG	CW	REA	FAT
130	52	9	-3.5	60	101	0.25	1.33	28	2	11	5	11	0.83	0.02	25	0.22	0.01

**70 ROYCES GOOD GIRL 78**  
 Tattoo:78 Birth: 7/27/17 REG#: 3932915 CAT:A 100% AR

BROWN JYJ REDEMPTION Y1334  
**ROYCE'S DUN RIGHT 44**  
 LRA DUNNI 211  
 BROWN COMMITMENT X7787  
**ROYCE'S DAZZLE 59**  
 LJL JULIAN 3Y

TENDER	BW
	65
IMF	WW
	528
REA	YW
	833
SCR	ADG
	1.91

HB	GM	CED	BW	WW	YW	ADG	DMI	Milk	ME	HPG	CEM	STAY	Marb	YG	CW	REA	FAT
141	53	9	-3.1	61	96	0.22	0.89	21	1	11	6	11	0.99	0.02	22	0.16	0.01

**71 MCPHEE DOUBLE DELITE 461**  
 Tattoo:461 Birth: 7/31/17 REG#: 3932891 CAT:A 100% AR

BROWN JYJ REDEMPTION Y1334  
**ROYCE'S DUN RIGHT 44**  
 LRA DUNNI 211  
 BROWN COMMITMENT X7787  
**MCPHEE CHARITY 428**  
 MCPHEE FANCY 366

TENDER	BW
	61
IMF	WW
	457
REA	YW
	785
SCR	ADG
	2.05

HB	GM	CED	BW	WW	YW	ADG	DMI	Milk	ME	HPG	CEM	STAY	Marb	YG	CW	REA	FAT
141	54	8	-2.8	64	102	0.24	1.13	25	1	12	6	11	0.95	0.01	27	0.22	0.01

**72 ROSES SPARKLE 117**  
 Tattoo:117H Birth: 9/4/17 REG#: 3933243 CAT:A 100% AR

BROWN PHENOMENAL Z7310  
**BROWN OUTSTANDING C271**  
 BROWN MS REDEMPTION A7174  
 MCPHEE REMARKABULL 4669  
**ROSE'S DIVA 82**  
 ROSE'S TOP DREAM 44

TENDER	BW
	67
IMF	WW
	538
REA	YW
	813
SCR	ADG
	1.69

HB	GM	CED	BW	WW	YW	ADG	DMI	Milk	ME	HPG	CEM	STAY	Marb	YG	CW	REA	FAT
159	52	9	-4.7	63	96	0.21	1.16	20	5	12	4	14	0.85	-0.08	20	0.34	0

**73 MCPHEE MY GIRL 463**  
 Tattoo:463 Birth: 9/6/17 REG#: 3932879 CAT:A 100% AR

BROWN PHENOMENAL Z7310  
**BROWN OUTSTANDING C271**  
 BROWN MS REDEMPTION A7174  
 DZA JOE MAKER 705  
**MCPHEE TEXAS ROSE 361**  
 BROWN MS MAJOR LEAGUE R6918

TENDER	BW
	70
IMF	WW
	447
REA	YW
	808
SCR	ADG
	2.2

HB	GM	CED	BW	WW	YW	ADG	DMI	Milk	ME	HPG	CEM	STAY	Marb	YG	CW	REA	FAT
143	51	8	-5.1	54	89	0.22	1.15	19	4	11	2	14	0.78	-0.01	16	0.24	0.02



**74 ANNAS ANGEL 101**  
 Tattoo:101 Birth: 7/15/17 REG#: 3932931 CAT:A 100% AR

BROWN REVELATION P7021  
**MCPHEE NEW REVELATION**  
 MCPHEE SMART PICK 4489  
 BROWN COMMITMENT X7787  
**ANNAS DANDELION 33**  
 ANNA'S DAFFADILL 14

TENDER	BW
	71
IMF	WW
	423
REA	YW
	725
SCR	ADG
	1.84

HB	GM	CED	BW	WW	YW	ADG	DMI	Milk	ME	HPG	CEM	STAY	Marb	YG	CW	REA	FAT
131	52	5	-3.2	52	86	0.21	0.82	30	3	14	1	12	0.86	-0.01	17	0.38	0.03

**75 MCPHEE WONDER GIRL 456**  
 Tattoo:456 Birth: 9/1/17 REG#: 3932877 CAT:A 100% AR

BROWN PHENOMENAL Z7310  
**BROWN OUTSTANDING C271**  
 BROWN MS REDEMPTION A7174  
 GOLDEN BOY 3533  
**MCPHEE DELTA BREEZE 359**  
 MCPHEE STAR 10

TENDER	BW
	77
IMF	WW
	374
REA	YW
	797
SCR	ADG
	2.59

HB	GM	CED	BW	WW	YW	ADG	DMI	Milk	ME	HPG	CEM	STAY	Marb	YG	CW	REA	FAT
150	52	9	-3.6	53	91	0.24	1.16	18	4	12	4	13	0.74	-0.07	20	0.43	0.01

**76 MCPHEE MISS TEXAS 5409**  
 Tattoo:5409 Birth: 8/4/17 REG#: 3932805 CAT:B 93.8% AR 6.2% XX

BROWN PHENOMENAL Z7310  
**BROWN OUTSTANDING C271**  
 BROWN MS REDEMPTION A7174  
 MCPHEE TOP COMMITMENT 352  
**MCPHEE TOP GAL 5110**  
 MCPHEE PACIFIC DARLING 4841

TENDER	BW
	76
IMF	WW
	398
REA	YW
	746
SCR	ADG
	2.12

HB	GM	CED	BW	WW	YW	ADG	DMI	Milk	ME	HPG	CEM	STAY	Marb	YG	CW	REA	FAT
157	52	9	-3.7	58	93	0.22	1.47	20	4	12	5	14	1.03	-0.07	20	0.35	0

**McPhee Red Angus • Open Yearling Heifers**

**77** **ROSES TULIP 115**  
 Tattoo:115 Birth: 8/10/17 REG#: 3933241 CAT:A 100% AR

BROWN JYJ REDEMPTION Y1334  
**ROYCE'S DUN RIGHT 44**  
 LRA DUNNI 211  
 BROWN COMMITMENT X7787  
**ROSE'S RUBY RED**  
 PCHFRK RUBY EXPECTATION 1851

TENDER	BW
	70
IMF	WW
	480
REA	YW
	725
SCR	ADG
	1.5

HB	GM	CED	BW	WW	YW	ADG	DMI	Milk	ME	HPG	CEM	STAY	Marb	YG	CW	REA	FAT
125	52	7	-2.8	57	85	0.18	1.01	25	1	12	4	11	0.98	-0.03	16	0.21	0.01

**78** **MCPHEE DOUBLE DELITE 5396**  
 Tattoo:5396 Birth: 8/10/17 REG#: 3932789 CAT:A 100% AR

MCPHEE TOP COMMITMENT 352  
**MCPHEE REMARKABULL 4669**  
 SCARLET 4064  
 DZA JOE MAKER 705  
**MCPHEE PARTYGIRL 5040**  
 MCPHEE LAVENDER 4427

TENDER	BW
	53
IMF	WW
	397
REA	YW
	710
SCR	ADG
	1.96

HB	GM	CED	BW	WW	YW	ADG	DMI	Milk	ME	HPG	CEM	STAY	Marb	YG	CW	REA	FAT
125	51	4	-0.4	64	98	0.21	0.89	28	8	13	4	11	0.6	0.01	28	0.23	0

**79** **MCPHEE DOUBLE DELITE 5420**  
 Tattoo:5420 Birth: 8/10/17 REG#: 3932873 CAT:A 100% AR

MCPHEE TOP COMMITMENT 352  
**MCPHEE REMARKABULL 4669**  
 SCARLET 4064  
 DZA JOE MAKER 705  
**MCPHEE PARTYGIRL 5040**  
 MCPHEE LAVENDER 4427

TENDER	BW
	53
IMF	WW
	358
REA	YW
	732
SCR	ADG
	2.34

HB	GM	CED	BW	WW	YW	ADG	DMI	Milk	ME	HPG	CEM	STAY	Marb	YG	CW	REA	FAT
125	51	4	-0.4	64	98	0.21	0.89	28	8	13	4	11	0.6	0.01	28	0.23	0

**80** **MCPHEE TINKERBELL 5393**  
 Tattoo:5393 Birth: 9/27/17 REG#: 3932751 CAT:A 100% AR

BROWN PHENOMENAL Z7310  
**BROWN OUTSTANDING C271**  
 BROWN MS REDEMPTION A7174  
 LCC MAJOR LEAGUE A502M  
**BOLA VICILA R205**  
 RABS MS VICILA H7532

TENDER	BW
	68
IMF	WW
	467
REA	YW
	758
SCR	ADG
	1.76

HB	GM	CED	BW	WW	YW	ADG	DMI	Milk	ME	HPG	CEM	STAY	Marb	YG	CW	REA	FAT
141	49	9	-6.4	49	77	0.18	1.23	20	5	11	1	14	0.68	-0.14	7	0.37	-0.01

**81** **MCPHEE RWF 5404**  
 Tattoo:5404 Birth: 7/6/17 REG#: 3932763 CAT:2 100% AR

MCPHEE TOP COMMITMENT 352  
**MCPHEE REMARKABULL 4669**  
 SCARLET 4064  
 TRUE TRADITION 3689  
**MCPHEE SUPREME 4661**  
 NELS DAISEY 4289

TENDER	BW
	106
IMF	WW
	593
REA	YW
	845
SCR	ADG
	1.52

HB	GM	CED	BW	WW	YW	ADG	DMI	Milk	ME	HPG	CEM	STAY	Marb	YG	CW	REA	FAT
118	52	2	1.8	77	115	0.24	1.03	19	7	13	6	10	0.59	0.01	41	0.18	-0.02



EPD Averages for Non-Parents Under Two Years of Age

100 HB 49 GM 5 CED -2.0 BW 58 WW 90 YW 0.20 ADG 0.63 DMI 21 MILK 1 ME 12 HPG 5 CEM 10 STAY 0.46 MARB 0.02 YG 21 CW 0.11 REA 0.00 FAT

**McPhee Red Angus • Spring Show Heifer Prospects**

**82 HEIFER**  
 Tattoo: Birth: 4/21/2018 REG#: PENDING CAT:A 100% AR

MCPHEE TOP COMMITMENT 352  
**ROYCE SENSATIONAL COMMIT 63**  
 ROYCE'S SENSATIONAL 14  
 MCPHEE REMARKABULL 4669  
**MCPHEE EYE CANDY 5307**  
 MCPHEE SPARK 4583

TENDER	BW
	76
IMF	WW
REA	YW
SCR	ADG

HB	GM	CED	BW	WW	YW	ADG	DMI	Milk	ME	HPG	CEM	STAY	Marb	YG	CW	REA	FAT
132	54	5	-2.1	68	114	0.29	1.14	30	7	13	4	11	0.67	0.01	35	0.30	0.00

**83 HEIFER**  
 Tattoo: Birth: 3/22/2018 REG#: PENDING CAT:A 100% AR

BROWN JYJ REDEMPTION Y1334  
**ROYCE'S DUN RIGHT 44**  
 LRA DUNNI 211  
 TRUE GRIT 3482  
**MRA KELLEY GIRL 12**  
 CANDY

TENDER	BW
	83
IMF	WW
REA	YW
SCR	ADG

HB	GM	CED	BW	WW	YW	ADG	DMI	Milk	ME	HPG	CEM	STAY	Marb	YG	CW	REA	FAT
97	51	6	-0.6	63	99	0.23	0.97	26	3	10	5	8	0.57	-0.00	28	0.14	-0.01

**84 HEIFER**  
 Tattoo: Birth: Born 2/4/2018 REG#: PENDING CAT:A 100% AR

BROWN JYJ REDEMPTION Y1334  
**ROYCE'S DUN RIGHT 44**  
 LRA DUNNI 211  
 LMAN ROBIN HOOD 1174B  
**MCPHEE SWEETNESS 4521**  
 WINNIE 2234

TENDER	BW
	85
IMF	WW
REA	YW
SCR	ADG

HB	GM	CED	BW	WW	YW	ADG	DMI	Milk	ME	HPG	CEM	STAY	Marb	YG	CW	REA	FAT
110	51	7	-2.1	58	95	0.23	1.05	18	4	12	8	8	0.54	-0.01	24	0.16	-0.01

**85 HEIFER**  
 Tattoo: Birth: 2/2/2018 REG#: PENDING CAT:A 100% AR

BROWN PREMIER X7876  
**FLATIRON PRECISION 643**  
 FLATIRON NINA 447  
 BROWN COMMITMENT X7787  
**ANNA'S PETUNIA**  
 ANNA'S POPPY 23

TENDER	BW
	66
IMF	WW
REA	YW
SCR	ADG

HB	GM	CED	BW	WW	YW	ADG	DMI	Milk	ME	HPG	CEM	STAY	Marb	YG	CW	REA	FAT
131	53	6	-2.3	65	102	0.23	0.85	20	1	12	3	11	0.78	-0.02	27	0.24	-0.01

**86 HEIFER**  
 Tattoo: Birth: Born 3/13/2018 REG#: PENDING CAT:A 100% AR

MCPHEE TOP COMMITMENT 352  
**ROYCE SENSATIONAL COMMIT 63**  
 ROYCE'S SENSATIONAL 14  
 ROYS HIGH NOON 3805  
**MRA ROLLS ROYCE 18**  
 MRA DREAMER 4174

TENDER	BW
	75
IMF	WW
REA	YW
SCR	ADG

HB	GM	CED	BW	WW	YW	ADG	DMI	Milk	ME	HPG	CEM	STAY	Marb	YG	CW	REA	FAT
104	51	5	-1.4	68	110	0.26	1.20	28	7	12	4	9	0.48	0.07	33	0.24	0.02



EPD Averages for Non-Parents Under Two Years of Age

100 HB 49 GM 5 CED -2.0 BW 58 WW 90 YW 0.20 ADG 0.63 DMI 21 MILK 1 ME 12 HPG 5 CEM 10 STAY 0.46 MARB 0.02 YG 21 CW 0.11 REA 0.00 FAT





# A more holistic approach to carcass value...

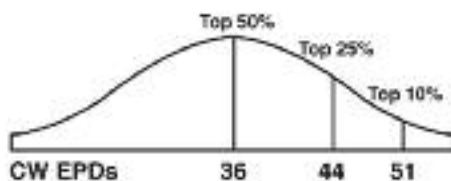
## Carcass Weight and Yield Grade

Advancing the mission of genetically describing Red Angus cattle for traits that have a direct impact on profitability, Red Angus has added Carcass Weight (CW) and Yield Grade (YG) EPDs to its arsenal of Economically Relevant Traits (ERTs). The deflated choice:select spread and reduced cattle numbers have combined to refocus the industry's selection pressure away from simply increasing Marbling Scores and looking instead to place greater selection pressure on Carcass Weight and Yield Grade. Red Angus Stakeholders are now equipped with the tools to make genetic progress in these two profit determining traits.



**Carcass Weight (CW)** Predicts differences in hot carcass weight and is expressed in pounds.

Determining the level of selection pressure placed on CW should be a very well thought out decision, as grid pricing assigns significant discounts on carcasses that are too light (less than 550 pounds) or too heavy (over 1,000 pounds). Therefore, producers should avoid reckless maximization/ minimization of CW EPD. A more appropriate use of the CW EPD starts with knowing the previous carcass performance of a producer's calf crop. Based on that initial information, producers can better determine the level of selection pressure for CW EPD in an effort to achieve their ideal carcass weight.



**Yield Grade (YG)** Predicts differences of carcass yield grade score and is expressed in USDA Yield Grade score (1- 5).

Just as the USDA Yield Grade is calculated using the individual animal's carcass weight, ribeye area (REA), and backfat (FAT) data, RAAA's YG EPD is calculated using the genetic predictions of CW, REA and FAT EPDs. The reliability of Red Angus' YG EPD is enhanced by using both ultrasound and actual carcass data in the calculation of REA and FAT EPDs. Prior to the publication of YG EPD, producers who desired a change in the yield grade genetics of their cattle were hamstrung, as they were forced to utilize two indicator traits (REA and FAT) of yield grade. Through providing a YG EPD, producers are now armed with a reliable, easy to implement tool which will better enable successful selection decision.

